



**HALTER**<sup>®</sup>  
FITNESS



<sup>®</sup> جلف أثليتكس  
ATHLETICS

**2020** |||||  
**CATALOGUE**



SCAN FOR MACHINES



SCAN FOR CARDIO



SCAN FOR ACCESSORIES



SCAN FOR GULF ATHLETICS CATALOGUE

# **CONTENT**

**Page No.**

**Halter Machines**

**1 - 29**

**Halter Cardio**

**30 - 49**

**Halter Accessories**

**50 - 69**

## PREMIUM QUALITY

Quality is Our PRIDE

Due to the insistence on high quality and affordable pricing, Halter Fitness stands out among manufacturers throughout world. Its a reputation we are proud of.

## RAW MATERIALS

Our attention to production quality is second to none. Our standards include using 3mm thickness pipe, using the best component parts and applying the most efficient assembly process. That's why our products stand the test of time

With more than 15 years of experience in the body-building and cardio machinery market, we are positioning ourselves as a reference brand, with more than 200 machines in catalogue and an R & D that generates new designs monthly. By not manufactur-

## CERTIFIED QUALITY

Our factory is located in Spain, Halter is a member of Fitlands fitness equipment company. With qualified personnel and updated facilities to improve the quality of our products, we are governed by the maximum requirements and characteristics of our machines, unique in the market





## **SELF DESIGN**

If quality is the soul of a company, then innovation is its heartbeat.

From the towering parabola designed 73 series to the simplest device for sky yoga, our standards of detail and quality can be seen in every welded joint, powder-coated finish, the material used, and the training angle.

We believe that training equipment should feel just right for the user. That's why we have been dedicated to build smooth and sturdy equipment, giving the user a sense of comfort and confidence that helps them get the best possible workout.

## **OVER 40 PATENTS**

We hold more than 40 product patents :

- Utility Model Patent Certificates Appearance
- Design Patent Certificates

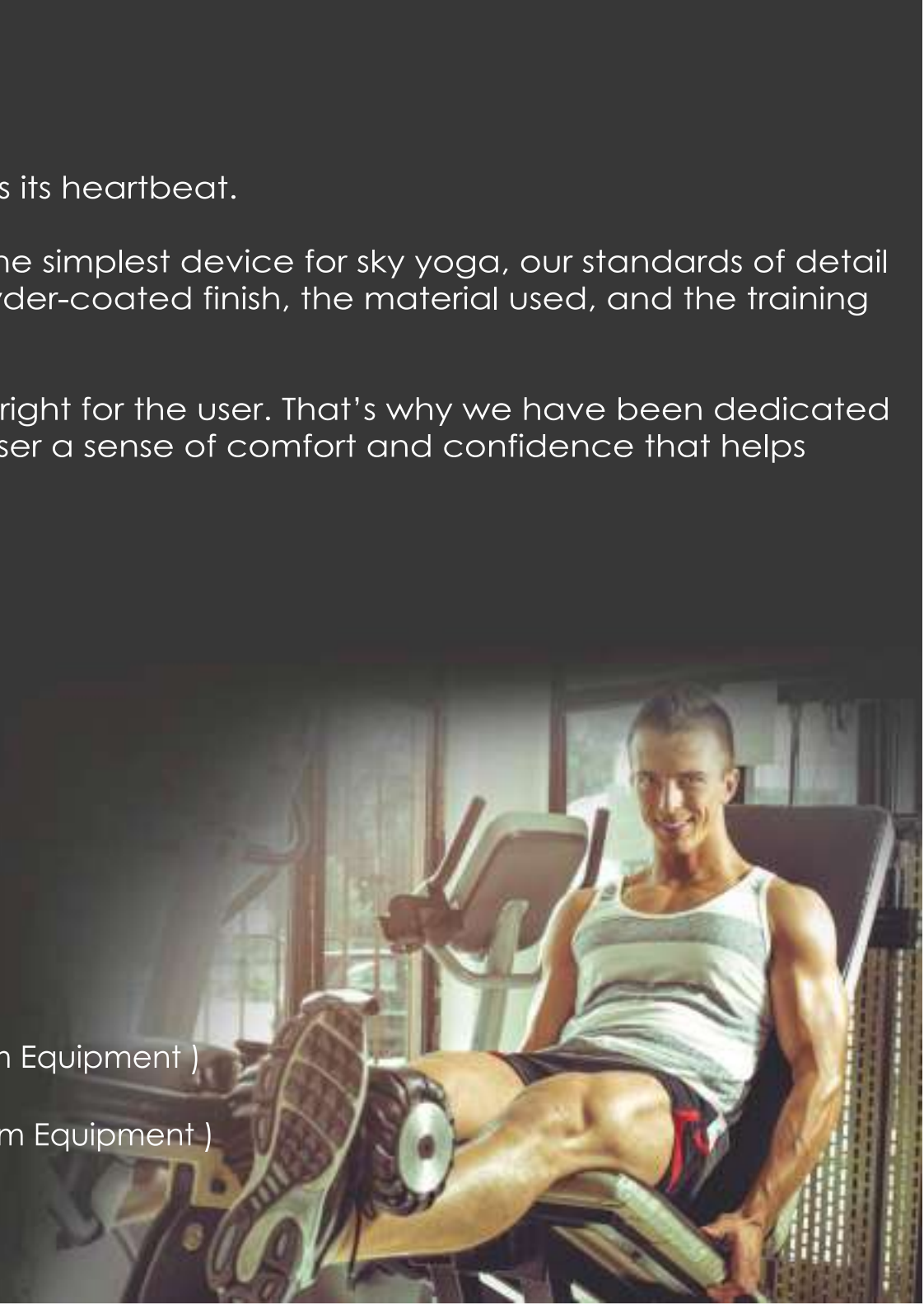
**MAGNOX** (Mid Premium Equipment )

**KOVER** (Premium Equipment )

**HALTER DUAL** (Premium Dual Equipment )

**HALTER PLATE LOADED** (Premium Equipment )

**HALTER MULTI STATION** (Premium Equipment )



# HALTER MAGNOX

A versatile line of strength equipment that includes selectorized units, benches and racks, and a dual adjustable pulley. All 58 pieces in the Magnox Series have a clean, inviting look and are designed to offer effective strength training solutions in any space





# HALTER MAGNOX



**HALTER MAGNOX  
SHOULDER PRESS**  
HS-61A01-SP  
Weight Stack  
70kg-14pcs/154lbs



**HALTER MAGNOX  
PULL UP SHOULDER**  
HS-61A02-PUS  
Weight stacks  
70kg-14pcs/154lbs



**HALTER MAGNOX  
SHOULDER PRESS  
CONVERGING**  
HS-61A01A-SPC  
Weight Stack  
70kg-14pcs/154lbs



**HALTER MAGNOX  
PECTORAL BUTTER  
FLY**  
HS-61A07-PB  
Weight stacks  
80kg-16pcs/176lbs



**HALTER MAGNOX  
LATERAL RAISE**  
HS-61A03-LR  
Weight stacks  
60kg-12pcs/132lbs



**HALTER MAGNOX  
CHEST PRESS**  
HS-61A04-CP  
Weight stacks  
80kg-16pcs/176lbs



**HALTER MAGNOX  
CHEST PRESS  
CONVERGING**  
HS-61A04A-CPC  
Weight stacks  
80kg-16pcs/176lbs



**HALTER MAGNOX  
TRICEPS DIP**  
HS-61A11-TD  
Weight stacks  
80kg-16pcs/176lbs

# HALTER MAGNOX



**HALTER MAGNOX  
PECTORAL FLY/REAR DELTOID**  
HS-61A09-PFRD  
Weight stacks  
80kg-16pcs/176lbs



**HALTER MAGNOX  
BICEPS CURL**  
HS-61A10-BC  
Weight stacks  
60kg-12pcs/132lbs



**HALTER MAGNOX  
MID ROW**  
HS-61A14-MR  
Weight stacks  
80kg-16pcs/176lbs



**HALTER MAGNOX  
LAT PULL DOWN**  
HS-61A15-LPD  
Weight stacks  
90kg-18pcs/198lbs



**HALTER MAGNOX  
TRICEPS EXTENSION**  
HS-61A12-TE  
Weight stacks  
60kg-12pcs/132lbs



**HALTER MAGNOX  
LOW ROW**  
HS-61A13-LR  
Weight stacks  
80kg-16pcs/176lbs



**HALTER MAGNOX  
STANDING ASSISTED  
CHIN/DIP**  
HS-61A16-SACD  
Weight stacks  
90kg-18pcs/198lbs



**HALTER MAGNOX  
ASSISTED CHIN/DIP**  
HS-61A16A-ACD  
Weight stacks  
80kg-16pcs/176lbs

# HALTER MAGNOX



## HALTER MAGNOX ADDUCTION

HS-61A22-ADD  
Weight stacks  
80kg-16pcs/176lbs



## HALTER MAGNOX ADDUCTION/ ABDUCTION

HS-61A60-ADAB  
Weight stacks  
80kg-16pcs/176lbs



## HALTER MAGNOX ABDUCTION

HS-61A23-ABD  
Weight stacks  
80kg-16pcs/176lbs



## HALTER MAGNOX PRONE LEG CURL

HS-61A26-PLC  
Weight stacks  
80kg-16pcs/176lbs



## HALTER MAGNOX SEATED LEG CURL

HS-61A25-SELC  
Weight stacks  
80kg-16pcs/176lbs



## HALTER MAGNOX LEG EXTENSION

HS-61A24-LE  
Weight stacks  
80kg-16pcs/176lbs



## HALTER MAGNOX STANDING LEG CURL

HS-61A25A-STLC  
Weight stacks  
100kg-20pcs/220lbs



## HALTER MAGNOX CABLE CROSSOVER

HS-61A32-CC  
Weight stacks  
70kg-14pcs/154lbs



# HALTER MAGNOX



**HALTER MAGNOX  
SEATED LEG PRESS**  
HS-61A28-SLP  
Weight stacks  
100kg-20pcs/220lbs



**HALTER MAGNOX  
SEATED CALF**  
HS-61A30-SEC  
Weight stacks  
80kg-16pcs/176lbs



**HALTER MAGNOX  
SMITH MACHINE**  
HBR-61A33-SM  
G.W.:235kgs/518lbs



**HALTER MAGNOX  
MULTIPOWER CAGE**  
HBR-61A34-MPC  
G.W.:185kgs/408lbs



**HALTER MAGNOX  
STANDING CALF**  
HCC-61A31-STC  
Weight stacks  
100kg-20pcs/220lbs



**HALTER MAGNOX  
FUNCTIONAL TRAI-  
NER**  
HCC-61A32B-FT  
Weight stacks  
70kg-14pcs/154lbs



**HALTER MAGNOX  
OLYMPIC INCLINE  
BENCH**  
HBR-61A38-OIB  
G.W.:145kgs/320lbs



**HALTER MAGNOX  
OLYMPIC FLAT  
BENCH**  
HBR-61A39-OFB  
G.W.:100kgs/220lbs

# HALTER MAGNOX



## HALTER MAGNOX LAT PULL DOWN DIVERGING

HS-61A15A-LPDD  
Weight stacks  
90kg-18pcs/198lbs



## HALTER MAGNOX UPPER/MID ABDO- MINAL TRAINER

HS-61A18-UMAT  
Weight stacks  
70kg-14pcs/154lbs



## HALTER MAGNOX LOWER ABDOMIN- AL TRAINER

HS-61A18A-LAT  
Weight stacks  
70kg-14pcs/154lbs



## HALTER MAGNOX ROTARY TORSO

HS-61A19-RT  
Weight stacks  
70kg-14pcs/154lbs



## HALTER MAGNOX BACK EXTENSION

HS-61A17-BE  
Weight stacks  
70kg-14pcs/154lbs



## HALTER MAGNOX MULTI HIP

HS-61A20-MH  
Weight stacks  
70kg-14pcs/154lbs



## HALTER MAGNOX GLUTEUS MAXIMUS TRAINER

HS-61A21-GMT  
Weight stacks  
80kg-16pcs/176lbs



## HALTER MAGNOX GLUTEUS MAXIMUS TRAINER

HS-61A21A-GMT  
Weight stacks  
80kg-16pcs/176lbs

# HALTER MAGNOX



**HALTER MAGNOX  
BICEPS CURL RACK**  
HBR-61A37-BCR  
G.W.:70kgs/154lbs



**HALTER MAGNOX  
FLAT/DECLINE AD-  
JUSTABLE BENCH**  
HBR-61A41-FDAB  
G.W.:65kgs/143lbs



**HALTER MAGNOX  
FIXED ANGLE SIT-UP  
BENCH**  
HBR-61A42-FASB  
G.W.:45kgs/99lbs



**HALTER MAGNOX  
ADJUSTABLE ROMAN  
BENCH**  
HBR-61A43-ARB  
G.W.:70kgs/154lbs



**HALTER MAGNOX  
OLYMPIC DECLINE  
BENCH**  
HBR-61A40-ODB  
G.W.:105kgs/231lbs



**HALTER MAGNOX  
KNEES RAISE**  
HBR-61A45-KR1  
G.W.:70kgs/154lbs



**HALTER MAGNOX  
KNEES RAISE**  
HBR-61A45A-KR2  
G.W.:77kgs/184lbs



**HALTER MAGNOX  
FLAT/INCLINE ADJ-  
USTABLE BENCH**  
HBR-61A46-FIAB  
G.W.:65kgs/143lbs



# HALTER DUAL

The Halter Dual-Series delivers a full range of eleven selectorized cable machines. Each machine has been ergonomically designed and engineered with commercial grade steel, industry leading weight stacks, premium double-stitched moulded pads and 1000kg rated cables, making the Stealth Cable Series perfect for any gym, PT studio or Fitness Centre.



# HALTER DUAL



**HALTER DUAL SHOULDER/CHEST PRESS**  
HD-5501-SC1  
Weight stacks  
90KG-18pcs / 198lbs



**HALTER DUAL SHOULDER/CHEST PRESS**  
HD-5502-SC2  
Weight stacks  
90KG-18pcs / 198lbs



**HALTER DUAL PEC DECK/REAR DELT**  
HD-5503-PDRD  
Weight stacks  
90KG-18pcs / 198lbs



**HALTER DUAL ASSISTED DIP CHIN UP**  
HD-5507-ADC  
Weight stacks  
80KG-16pcs/176lbs



**HALTER DUAL AB CRUNCH BACK EXTENSION**  
HD-5508-AB  
Weight stacks  
70KG-14pcs/154lbs



**HALTER DUAL LEG EXTENSION/LYING LEG CURL**  
HD-5509-LELC  
Weight stacks  
90KG-18pcs/198lbs



**HALTER DUAL BICEPS/TRICEPS**  
HD-5504-BT  
Weight stacks  
70KG-14pcs/154lbs



**HALTER DUAL STANDING BICEPS/TRICEPS**  
HD-5505-SBT  
Weight stacks  
100KG-20pcs/220lbs



**HALTER DUAL LAT PULL DOWN/LOW ROW**  
HD-5506-LPDLR  
Weight stacks  
100KG-20pcs/220lbs



**HALTER DUAL ADDUCTOR/ABDUCTOR**  
HD-5510-ADAB  
Weight stacks  
80KG-16pcs/176lbs



**HALTER DUAL LEG PRESS/CALF**  
HD-5511-LPC  
Weight stacks  
100KG-20pcs/220lbs



# HALTER KOVAR

The Halter Dual-Series delivers a full range of eleven selectorized cable machines. Each machine has been ergonomically designed and engineered with commercial grade steel, industry leading weight stacks, premium double-stitched moulded pads and 1000kg rated cables, making the Stealth Cable Series perfect for any gym, PT studio or Fitness Centre.





# HALTER KOVAR



**HALTER KOVAR  
SHOULDER PRESS**  
HS-7301-SP  
Weight stacks  
70kg-14pcs/154lbs



**HALTER KOVAR  
INCLINE SHOULDER  
PRESS**  
HS-7301A-ISP  
Weight stacks  
70kg-14pcs/154lbs



**HALTER KOVAR  
SHOULDER PULL UP**  
HS-7302-SPU  
Weight stacks  
70kg-14pcs/154lbs



**HALTER KOVAR  
UPPER CHEST PRESS**  
HS-7305A-UCP  
Weight stacks  
90kg-18pcs/198lbs



**HALTER KOVAR  
LATERAL RAISE**  
HS-7303-LR  
Weight stacks  
70kg-14pcs/154lbs



**HALTER KOVAR  
LOWER CHEST PRESS**  
HS-7304-LCP  
Weight stacks  
90kg-18pcs/198 lbs



**HALTER KOVAR  
MID CHEST PRESS**  
HS-7305-MCP  
Weight stacks  
90kg-18pcs/198lbs



**HALTER KOVAR  
CROSS ARM TRAINER**  
HS-7308-CAT  
Weight stacks  
90kg-18pcs/198lbs

# HALTER KOVAR



**HALTER KOVAR  
INCLINE CHEST PRESS**  
HS-7306-ICP  
Weight stacks  
90kg-18pcs/198lbs



**HALTER KOVAR  
PECTORAL BUTTERFLY**  
HS-7307-PB  
Weight stacks  
90kg-18pcs/198lbs



**HALTER KOVAR  
TRICEPS DIP**  
HS-7311-TD  
Weight stacks  
70kg-14pcs/154lbs



**HALTER KOVAR  
TRICEPS EXTENSION**  
HS-7312-TE  
Weight stacks  
70kg-14pcs/154lbs



**HALTER KOVAR  
PECTORAL FLY/REAR  
DELTOID**  
HS-7309-PFRD  
Weight stacks  
90kg-18pcs/198lbs



**HALTER KOVAR  
BICEPS CURL**  
HS-7310-BC  
Weight stacks  
70kg-14pcs/154lbs



**HALTER KOVAR  
MID ROW**  
HS-7314-MR  
Weight stacks  
90kg-18pcs/198lbs



**HALTER KOVAR  
45 UPPER BACK PULL DOWN**  
HS-7314A-45UBPD  
Weight stacks  
90kg-18pcs/198lbs

# HALTER KOVAR



**HALTER KOVAR  
LOW ROW**  
HS-7313-LR  
Weight stacks  
90kg-18pcs/198lbs



**HALTER KOVAR  
ASSISTED CHIN/DIP**  
HS-7316-ACD  
Weight stacks  
90kg-18pcs/198lbs



**HALTER KOVAR  
BACK EXTENSION**  
HS-7317A-BE  
Weight stacks  
90kg-18pcs/198lbs



**HALTER KOVAR  
UPPER/MID ABDOMI-  
NAL TRAINER**  
HS-7318-UMAT  
Weight stacks  
70kg-14pcs/154lbs



**HALTER KOVAR  
LAT PULL DOWN**  
HS-7315-LPD  
Weight stacks  
90kg-18pcs/198lbs



**HALTER KOVAR  
LOWER ABDOMINAL  
TRAINER**  
HS-7318A-LAT  
Weight stacks  
70kg-14pcs/154lbs



**HALTER KOVAR  
ROTARY TORSO**  
HS-7319-RT  
Weight stacks  
70kg-14pcs/154lbs



**HALTER KOVAR  
SIDE TURNING**  
HS-7319A-ST  
Weight stacks  
70kg-14pcs/154lbs



# HALTER KOVAR



**HALTER KOVAR  
MULTI HIP**  
HS-7320-MT  
Weight stacks  
70kg14-pcs/154lbs



**HALTER KOVAR  
GLUTEUS MAXIMUS  
TRAINER**  
HS-7321-GMT  
Weight stacks  
70kg14-pcs/154lbs



**HALTER KOVAR  
ADDUCTION**  
HS-7322-ADD  
Weight stacks  
90kg18-pcs/198 lbs



**HALTER KOVAR  
SEATED LEG CURL**  
HS-7325-SELC  
Weight stacks  
90kg18-pcs/198lbs



**HALTER KOVAR  
ABDUCTION**  
HS-7323-ABD  
Weight stacks  
90kg18-pcs/198lbs



**HALTER KOVAR  
ADDUCTION/ABDU-  
CTION**  
HS-7360-ADAB  
Weight stacks  
90kg18-pcs/198lbs



**HALTER KOVAR  
LEG EXTENSION**  
HS-7324-LE  
Weight stacks  
90kg18-pcs/198lbs



**HALTER KOVAR  
SEATED LEG PRESS**  
HS-7328-SELP  
Weight stacks  
90kg18-pcs/198lbs

# HALTER KOVAR



**HALTER KOVAR  
PRONE LEG CURL**  
HS-7326-PLC  
Weight stacks  
90kg-18pcs/198lbs



**HALTER KOVAR  
POWERFUL SQUAT**  
HS-7327-POSQ  
Weight stacks  
90kg-18pcs/198lbs



**HALTER KOVAR  
STANDING CALF**  
HS-7331-STC  
Weight stacks  
90kg-18pcs/198lbs



**HALTER KOVAR  
CABLE CROSSOVER**  
HCC-7332-CC  
Weight stacks  
140kg-28pcs/309lbs



**HALTER KOVAR  
45 LEG PRESS**  
HS-7329-45LP  
G.W.:360kgs/ 794lbs



**HALTER KOVAR  
SEATED CALF**  
HS-7330-SEC  
Weight stacks  
100kg-20pcs/220lbs



**HALTER KOVAR  
SMITH MACHINE**  
HBR-7333-SM  
G.W.:278kgs/613lbs



**HALTER KOVAR  
3D SMITH MACHINE**  
HBR-7333A-3DSM  
G.W.:330kgs/728lbs

# HALTER KOVAR



**HALTER KOVAR  
FUNCTIONAL TRAINER**  
HCC-7332A-FT  
Weight stacks  
140kg-28pcs/309lbs



**HALTER KOVAR  
KOVAR T TYPE STRETCH**  
HBR-7336-TTS  
G.W.:112kgs/247 lbs



**HALTER KOVAR  
BICEPS CURL RACK**  
HBR-7337-BCR  
G.W.:90kgs/198lbs



**HALTER KOVAR  
OLYMPIC INCLINE BENCH**  
HBR-7338-OIB  
G.W.:152kgs/335lbs



**HALTER KOVAR  
MULTI POWER CAGE**  
HBR-7334-MPC  
G.W.:197kgs/434lbs



**HALTER KOVAR  
OLYMPIC FLAT BENCH**  
HBR-7339-OFB  
G.W.:150kgs/331lbs



**HALTER KOVAR  
OLYMPIC DECLINE  
BENCH**  
HBR-7340-ODB  
G.W.:150kgs/331lbs



**HALTER KOVAR  
FLAT/DECLINE ADJUSTABLE  
BENCH**  
HBR-7341-FDAB  
G.W.:121kgs/267lbs



# HALTER KOVAR



**HALTER KOVAR  
FIXED ANGLE SIT UP**  
HBR-7342-FASB  
G.W.:51kgs/112lbs



**HALTER KOVAR  
ADJUSTABLE ROMAN  
BENCH**  
HBR-7343-ARB  
G.W.:93kgs/205 lbs



**HALTER KOVAR  
KNEES RAISE**  
HBR-7345-KR  
G.W.:109kgs/240 lbs



**HALTER KOVAR  
INCLINE BENCH 30**  
HBR-7348-IB30  
G.W.:77kgs/169 lbs



**HALTER KOVAR  
FLAT/INCLINE ADJUST-  
ABLE BENCH**  
HBR-7346-FIAB  
G.W.:79kgs/174 lbs



**HALTER KOVAR  
FLAT/INCLINE/DECLINE  
ADJUSTABLE BENCH**  
HBR-7346A-FIDAB  
G.W.:112kgs/ 247 lbs



**HALTER KOVAR  
FLAT BENCH**  
HBR-7347-FB  
G.W.:72kgs/159 lbs



**HALTER KOVAR  
PLATE RACK**  
HBR-7351-PLR  
G.W.:101kgs/223 lbs

# HALTER KOVAR



**HALTER KOVAR  
INCLINE BENCH 45**  
HBR-7349-IB45  
G.W.:37kgs/82lbs



**HALTER KOVAR  
INCLINE BENCH 60**  
HBR-7350-IB60  
G.W.:77kgs/169lbs



**HALTER KOVAR  
UTILITY BENCH**  
HBR-7355-UB  
G.W.:30kgs/66lbs



**HALTER KOVAR  
10 PAIRS DUMBBELL RACK**  
HBR-7353-10PDR  
G.W.:94kgs/207lbs



**HALTER KOVAR  
BARBELL RACK**  
HBR-7354-BR  
G.W.:120kgs/265 lbs



**HALTER KOVAR  
EASY SQUAT/SIT UP**  
HBR-7357-ESS  
G.W.:55kgs/121lbs



# HALTER PLATE LOADED

Premium options for exercisers looking to expand their strength training progression beyond standard selectorized machines.

Each of the 35 units combines outstanding performance with a striking design aesthetic





# HALTER PLATE LOADED



**HALTER PLATE LOADED  
ISO-LATERAL SUPER  
INCLINE PRESS**  
HPL-82001-ISO-SIP  
G.W.:195kgs/ 430lbs



**HALTER PLATE LOADED  
ISO-LATERAL SHOULDER  
PRESS**  
HPL-82002-ISO-SP  
G.W.:200kgs/441lbs



**HALTER PLATE LOADED  
ISO-LATERAL WIDE PULL  
DOWN**  
HPL-82003-ISO-WP  
G.W.:155kgs/ 342 lbs



**HALTER PLATE LOADED  
PULL BACK**  
HPL-82006-PB  
G.W.:145kgs/320lbs



**HALTER PLATE LOADED  
ISO-LATERAL FRONT  
LAT PULLDOWN**  
HPL-82004-ISO-FLP  
G.W.: 205kgs /452lbs



**HALTER PLATE LOADED  
ISO-LATERAL FRONT  
LAT PULLDOWN**  
HPL-82004A-ISO-FLP  
N.W.: 145KG /320lbs



**HALTER GROUND BASE  
PLATE LOADED  
SQUAT/HIGH PULL**  
HPL-82005-GB-SHP  
G.W.:165kgs/364 lbs



**HALTER PLATE LOADED  
STANDING PULL BACK**  
HPL-82008-ISO-SPB  
G.W.:140kgs/ 309 lbs

# - HALTER PLATE LOADED



**HALTER PLATE LOADED  
ISO-LATERAL D.Y. ROW**  
HPL-82007-ISO-LDYR  
G.W.:205kgs/ 452bs



**HALTER PLATE LOADED  
ISO-LOW ROW MACHINE**  
HPL-82007A-ISO-LRM  
N.W.: 110KG243lbs



**HALTER PLATE LOADED  
GROUND BASE COMBO  
TWIST RIGHT**  
HPL-82011-GB-CTR  
G.W.:125kgs/276lbs



**HALTER PLATE LOADED  
ISO-LATERAL INCLINE CHEST  
PRESS**  
HPL-82012-ISO-ICP  
G.W.:205kgs/ 452lbs



**HALTER GROUND BASE  
COMBO INCLINE**  
HPL-82009-GB-CI  
G.W.:145kgs/ 320 lbs



**HALTER PLATE LOADED  
GROUND BASE COMBO  
TWIST LEFT**  
HPL-82010-GB-CTL  
G.W.:125 kgs/ 276 lbs



**HALTER PLATE LOADED  
ISO-LATERAL BENCH  
PRESS**  
HPL-82014-ISO-BP  
G.W.:165kg /364lbs



**HALTER PLATE LOADED  
ISO-LATERAL HORIZONTAL  
BENCH PRESS**  
HPL-82015-ISO-HBP  
G.W.:185 kgs/ 408lbs

# - HALTER PLATE LOADED



**HALTER ISO-LATERAL  
DECLINE BENCH PRESS**  
HPL-82013-ISO-DBP  
G.W.:190 kgs/ 419lbs



**HALTER PLATE LOADED  
ISO-LATERAL LEG PRESS**  
HPL-82017-ISO-LP  
G.W.:260 kgs/ 573lbs



**HALTER PLATE LOADED  
SEATED CALF RAISED**  
HPL-82018-SECR  
G.W.:175kgs/ 386 lbs



**HALTER PLATE LOADED  
STANDING CALF MA-  
CHINE**  
HPL-82019-STCM  
G.W.:185kgs/ 408 lbs



**HALTER PLATE LOADED  
SQUAT LUNGE**  
HPL-82029-SQLU  
G.W.:160kgs/ 352 lbs



**HALTER PLATE LOADED  
LEG PRESS**  
HPL-82016-LP1  
G.W.:250kgs/551lbs



**HALTER PLATE LOADED  
ISO-LATERAL FRONT  
LAT PULLDOWN**  
HPL-82004-ISO-FLP



**HALTER PLATE LOADED  
V SQUAT**  
HPL-82020-VSQUAT  
G.W.:240 kgs/ 529 lbs



**HALTER PLATE LOADED  
JAMMER**  
HPL-82021-JMR  
G.W.: 210 kgs / 463 lbs



**HALTER HIP THRUST  
MACHINE**  
HPL-82032-HTM  
N.W.: 100KG/220lbs



# HALTER PLATE LOADED



## HALTER PLATE LOADED LEG PRESS

HPL-82022-LP2  
G.W.:260kgs / 573lbs



## HALTER PLATE LOADED ISO-LATERAL LEG EXTENSION

HPL-82023-ISO-LE  
G.W.:185kgs/ 408 lbs



## HALTER PLATE LOADED ISO-LATERAL LEG CURL

HPL-82024-ISO-LC  
G.W.:175 kgs/ 386 lbs



## HALTER PLATE LOADED LINEAR LEG PRESS

HPL-82028-LLP  
G.W.:275 kgs/ 606 lbs



## HALTER PLATE LOADED GLUTE

HPL-82030-GL  
G.W.:145kgs/ 320lbs



## HALTER PLATE LOADED HIP TRAINER

HPL-82025-HT  
G.W.:220kgs/ 485 lbs



## HALTER PLATE LOADED COMBO DECLINE

HPL-82026-CD  
G.W.:220kgs/ 485 lbs



## HALTER PLATE LOADED SEATED SHRUG

HPL-82027-SESH  
G.W.:120kgs/ 265lbs



## HALTER PRONE LEG PRESS MACHINE

HPL-82031-PM  
N.W.: 105KG/231lbs

# HALTER CABLE MULTI-FUNCTIONAL STATION

These 12 stations deliver effective and versatile multi-dimensional strength training. User-defined paths of motion allow for nearly endless exercise possibilities and build balance, strength and power.



# HALTER CABLE MULTI-FUNCTIONAL STATION



**HALTER 4 STATION  
SINGLE POD**  
HMS-E16280  
G.W.:789kgs/1424lbs



**HALTER 6 STATION  
SINGLE POD WITH CR-  
OSSOVER**  
HMS-E16280A  
G.W.:990kgs/2183lbs



**HALTER 9 STATION  
DUAL POD**  
HMS-E16280B  
G.W.:1629kgs/3591bs



**TRIPOD**  
HMS-E16280C  
G.W.:2328kgs/5132bs



**HALTER 4 STATION 8  
FUNCTION TRAINER**  
HMS-E15348  
Weight stack  
Shoulder / Chest Press  
90 kg/198lbs





# HALTER CABLE MULTI-FUNCTIONAL STATION



**HALTER MULTI STATION  
MAIN BODY GROUP**  
HMS-7505



**HALTER MULTI STATION  
BACK GROUP**  
HMS-7503



**HALTER MULTI STATION  
CABLE GROUP**  
HMS-7506



**HALTER MULTI STATION  
CHEST GROUP**  
HMS-7502



**HALTER MULTI STATION  
SHOULDER GROUP**  
HMS-7501



**HALTER MULTI STATION  
LEG GROUP**  
HMS-7504

# HALTER MAGNOX



**HALTER MAGNOX  
MULTI ADJUSTABLE  
BENCH**

HBR-61A46B-MA  
G.W.:65kgs/143lbsB



**HALTER MAGNOX  
FLAT BENCH**

HBR-61A47-FB  
G.W.:77kgs/184lbs



**HALTER MAGNOX  
PLATE RACK**

HBR-61A51-PR  
G.W.:60kgs/132lbs



**HALTER MAGNOX  
UTILITY BENCH**

HBR-61A55-UB  
G.W.:35kgs/77lbs



**HALTER MAGNOX  
SISSY SQUAT COMBI-  
NATION TRAINER**

HBR-61A57-SSCT  
G.W.:35kgs/77lbs



**HALTER MAGNOX 10  
PAIRS DUMBBELLS RACK  
(20-65LBS) (60-105LBS)**

HBR-61A53-10PDR  
G.W.:70kgs/154lbs



**HALTER MAGNOX 3 TIERS 15  
PAIRS DUMBBELL RACK  
(20-90LBS)**

HBR-61A53A-3T15PDR  
G.W.:100kgs/220lbs



**HALTER MAGNOX  
BARBELL RACK (30-100LBS)**

HBR-61A54-BR  
G.W.:82kgs/181lbs



**HALTER MAGNOX  
SMITH/FUNCTIONAL  
TRAINER COMBO**

HCC-8504-SFTC1  
G.W.:450kgs/1000lbs



**HALTER MAGNOX  
SMITH/FUNCTIONAL  
TRAINER COMBO**

HCC-8504-SFTC2

# HALTER TREADMILL





# HALTER TREADMILL

COMMERCIAL TREADMILL TOUCH SCREEN

HCC-YA75TV



## FEATURES

The 19-inch LCD  
Touch Panel TV smart computer  
Equipped with the latest eight-core processor  
An ultra-high resolution TFT touch screen system design  
Compatible with Android system  
WIFI wireless network connection function  
Real-world interactive training program  
Support live mode double safety switch  
Maintenance-free running board  
HP AC PV: 7.0 HP 3  
Incline: -3%-15% Speed: 0.8-22 km/h  
Footprint: 2280 x 990x 1650 mm  
Running area: 550 x 1575 mm  
Carton size: 2370\*1010\*550mm  
Gross weight: 220 KGS Net weight: 196 KGS  
Maximum load: 180kg

COMMERCIAL TREADMILL TOUCH SCREEN

HCC-YA75



## FEATURES

High-definition LED display  
Light-sensitive touch technology buttons  
The new light-sensitive button design and can be operated by a light touch  
Double safety switch  
Equipped with aluminum alloy anti-skid pedals  
HP AC PV: 7.0 HP 3  
Incline: -3%-15% Speed: 0.8-22 km/h  
Footprint: 2280 x 990x 1650 mm  
Running area: 550 x 1575 mm  
Carton size: 2370\*1010\*550mm  
Gross weight: 220 KGS Net weight: 196 KGS  
Maximum load: 180kg

# HALTER TREADMILL

COMMERCIAL TREADMILL TOUCH SCREEN

HCC-YV9T



## FEATURES

Console:19.5  
LCD Touch Screen with fans  
Heart Rate Display  
Display speed, distance, time, slope, heart rate, calorie Program  
Airbag system for anti-shock ax  
user weight: 180kg/395lbs  
Machine size: (L X W X H) 2083 X 982 X 585mm  
Applicable running area: 1550 X 585mm  
G.W/N.W: 242.2kgs/217.5kgs  
3HP AC PV:7.0 HP 0.8-20km/h  
Carton size: 2170 X 455mm 1050 X 1020 X 390mm

COMMERCIAL TREADMILL

HCC-YV8



## FEATURES

HP AC 2  
PV: 5.0 HP  
Run Area:1450\*560mm  
Display:LED  
Readouts:Speed,Distance,Time,Slope,Heart rate,Calorie,Program  
Other:Fan,Heart rate  
wireless heart rate  
wireless charge  
Foldable:No  
Program:12 groups of speed preset programs using the internationalization  
standardized pattern  
FITSHOW APP 24pcs/20'GP 67pcs/40'HQ 0.8-20km/h 0-18% incline  
N.W: 159kg G.W: 175kg  
Carton size: 2180\*970\*450mm  
Machine size: 2000\*879\*1625mm

# HALTER TREADMILL

HCC-YV9T



COMMERCIAL TREADMILL

## FEATURES

HP AC 2  
PV: 5.0 HP  
Max. User Weight:180KG  
Run Area:1450\*560mm  
Display:21.5" Touch TV  
Readouts:Speed,Distance,Time,Slope,Heart rate,Calorie,Program  
Other:Fan,Heart rate  
wireless heart rate  
wireless charge  
Flodable:No  
Program:12 groups of speed preset programs using the internationalization  
standardized pattern

HCC-Hero-8000



COMMERCIAL TREADMILL

## FEATURES

LED console  
Belt adjusted automatically  
Motor belt adjusted automatically  
Fan included  
Speed : 1-20 km/h  
Incline : 0-20%  
Motor: AC motor  
House power: Continuous 3.0 HP Peak: 7.0HP  
G.W: 287 kgs  
N.W 233 kg  
Running belt: 580(width)×3460(perimeter)mm  
Installation size:2370\*930\*1600 mm  
Package Size: 2310×1120×700 mm



# HALTER TREADMILL

HCC-Hero-8008



CURVED TREADMILL

## FEATURES

Resistance: 1-8 magnet resistance  
Sports: 3 sports mode  
Running Area :1500\*430mm  
Speed : 1-20 km/h  
Capacity: 180kg  
Installation size: 2000\*900\*1530mm  
Package Size:1850\*1050\*650mm  
G.W: 175 kg  
N.W: 155 kg



# HALTER BIKE



# HALTER BIKE

HCC-75U



GENERATOR BIKE

## FEATURES

The display panel adopts high-definition a large 8X16 dot matrix display U" Style armrest design, specially designed elbow pad, more comfortable to use, closer to the feeling of outdoor riding; Generator (Self-power), a self-powered technology that has won multinational patents ,Cushion: 15-segment up and down adjustment 16-segment electromagnetic control resistance system, 230MM self-generator set \*1 group

HCC-75R



GENERATOR WALK-THRU RECUMBENT

## FEATURES

The display panel adopts high-definition a large 8X16 dot matrix display U" Style armrest design, specially designed elbow pad, more comfortable to use, closer to the feeling of outdoor riding; Generator (Self-power), a self-powered technology that has won multinational patents 16-segment electromagnetic control resistance system, 230MM self-generator set \*1 group



# HALTER BIKE

GENERATOR ELLIPTICAL

HCC-75D



## FEATURES

The display panel adopts high-definition a large 8X16 dot matrix display U" Style armrest design, specially designed elbow pad, more comfortable to use, closer to the feeling of outdoor riding; Generator (Self-powered), a self-powered technology that has won multinational patents 16-segment electromagnetic control resistance system, 230MM self-generator set \*1 group

GENERATOR EMS BIKE

HCC-Y2200L



## FEATURES

With backlight computer LED display  
Multiple Display for 12 Program Profiles+4 user's memory,"Speed","Rpm","Time","Distance","Watt","Calories","Pulse"with"Watt Control","heart Rate Control"and special"Recovery"function  
EMS bike with self-generating power system  
With High Power Magnet and Flywheel to get sufficient tension torque and consistent resistance  
With 16-step tension control system  
With Hand-Pulse System for Heart Rate Display  
Container loading: 60 pcs / 20' FCL, 131 pcs / 40' FCL, 162 pcs / 40' HQ  
Certificate: GS

# HALTER BIKE

GENERATOR EMS WALK-THRU RECUMBENT

HCC-Y3200L



## FEATURES

with backlight computer LED display  
Multiple Display for 12 Program Profiles+4 user's memory, "Speed", "Rpm", "Time", "Distance", "Watt", "Calorie s", "Pulse" with "Watt Control", "heart Rate Control" and special "Recovery" function  
EMS bike with self-generating power system  
With High Power Magnet and Flywheel to get sufficient tension torque and consistent resistance  
With 16-step tension control system  
With Hand-Pulse System for Heart Rate Display  
Container loading: 18 pcs / 20' FCL, 36 pcs / 40' FCL, 54 pcs / 40' HQ  
Certificate: GS

HCC-Y5200L

GENERATOR EMS ELLIPTICAL



## FEATURES

With backlight computer LED display  
Multiple Display for 12 Program Profiles+4 user's memory, "Speed", "Rpm", "Time", "Distance", "Watt", "Calorie s", "Pulse" with "Watt Control", "heart Rate Control" and special "Recovery" function  
EMS bike with self-generating power system  
With High Power Magnet and Flywheel to get sufficient tension torque and consistent resistance  
With 16-step tension control system  
With Hand-Pulse System for Heart Rate Display  
Container loading: 16 pcs / 20' FCL, 34 pcs / 40' FCL, 51 pcs / 40' HQ  
Certificate: GS



# HALTER BIKE

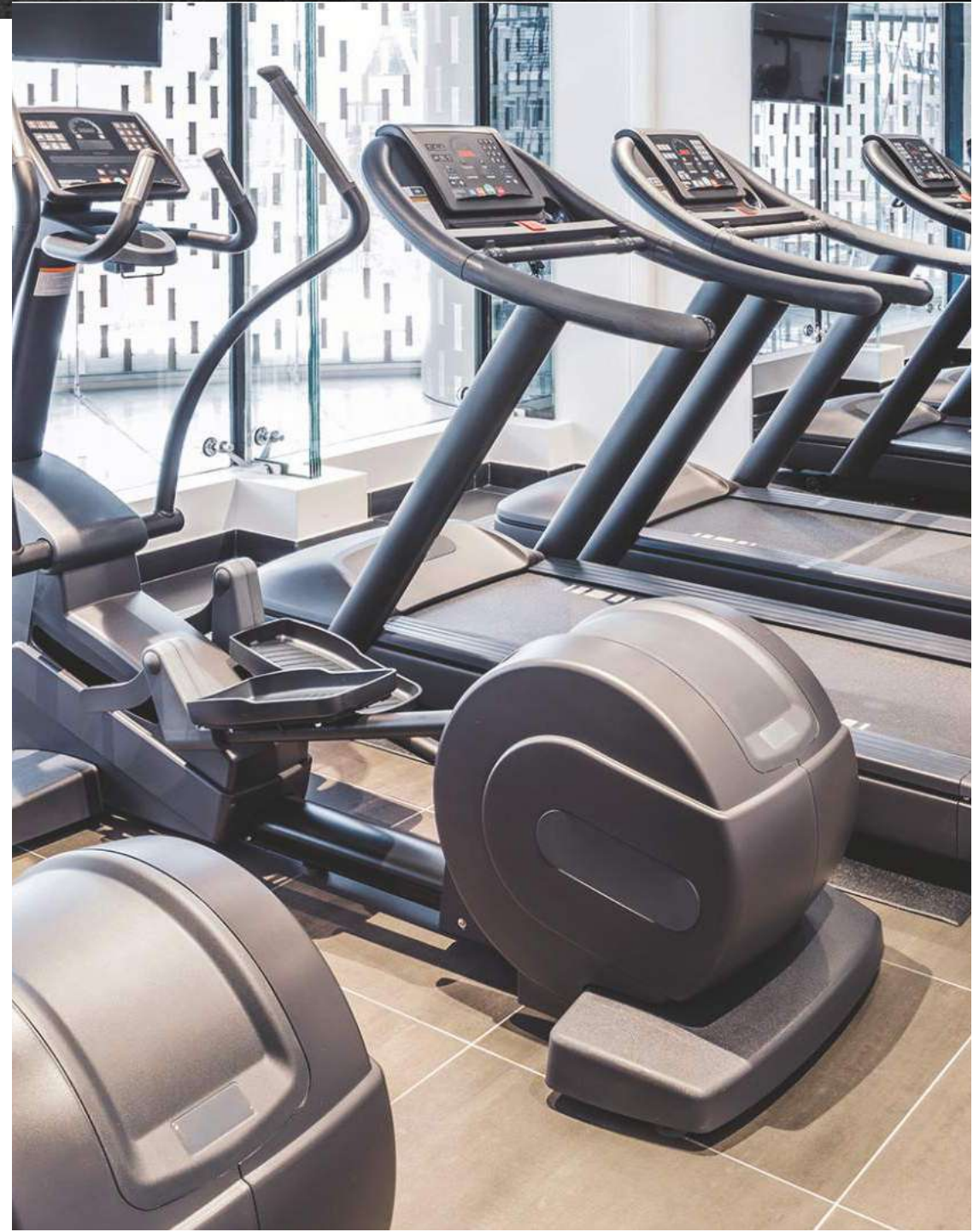
HCC-Y800

EMS STEPPER



## FEATURES

- With regular LCD with backlight computer
- Multiple Display for 12 Program Profiles+4 user's memory,"Speed", "Rpm", "-Time", "Distance", "Watt", "Calorie s", "Pulse"with "Watt Control", "heart "Rate Control
- .and special "Recovery" function
- . EMS power system, with 18V transformer
- With High Power Magnet and Flywheel to get sufficient tension torque and .consistent resistance
- With 16-step tension control system
- .With Hand-Pulse System for Heart Rate Display
- Container loading: 40pcs / 20' FCL, 85pcs / 40' FCL, 95pcs / 40' HQ





# HALTER ROWING MACHINE



# HALTER ROWING MACHINE

HCC-YR500



ROWING MACHINE

## FEATURES

Equipped with big size 118\*178\*21mm LED, dual color display  
1-16Resistance adjustment 3230V50HZ 9VDC500mA  
Plug needed  
Display: Time, distance, speed, Calories, heart beat, age, weights, height, gender, and training method  
Package size: A: 1550\*90\*180mm B:1050\*440\*990mm Assembled size: 1530\*460\*1800mm  
N.W:55KG, G.W:60KG  
Max user: 150kg

HCC-YR400



AIR ROWER

## FEATURES

Regular LCD display  
Multi display: Calories/Speed/Time/Distance/Watts/RPM/10 resistances adjustments  
Alluminum alloy track Easy foldable

# HALTER ROWING MACHINE

HCC-YAB100



AIR BIKE

## FEATURES

Regular LCD display  
Multi display: Calories/Speed/Time/Distance/Watts/RPM/10 resistances adjustments

HCC-YAB200



AIR BIKE

## FEATURES

Regular LCD with backlight computer  
Multiple Display "Speed", "Rpm", "Time", "Distance", "Recovery" function  
Chain structure  
Wind resistance control system, The air volume can be adjusted. W/O transformer  
Fan Dimensions: 26 inch  
The resistances depend on the speed of the stampedes  
Container loading: 68 pcs / 20' FCL, 146pcs / 40' FCL, 164 pcs / 40' HQ

Carton Size: 1283\*279\*89.5mm Set up size: 1250\*540\*1200mm  
Net Weight: 43KGS, Gross Weight: 50KGS Max user weight: 160kgs



# HALTER ROWING MACHINE

HCC-YAB100



AIR BIKE

## FEATURES

Training molds LCD display 7  
Multi display: Calories/Speed/Time/Distance/Watts/RPM  
steel made fan "27  
Ergonomic sweatproof seat  
The resistances depend on the speed of the stampedes  
.Chain Structure  
Loading Qty: 216pcs/40'HQ,172pcs/40'GP,76pcs/20'GP

Carton Size: 1100\*250\*900mm Set up size: 1200\*610\*1300mm  
Net Weight: 28KGS, Gross Weight: 30KGS Max user weight: 160kgs



# HALTER SPINNING BIKE



# HALTER SPINNING BIKE

SPIN BIKE COMMERCIAL

HCC-SP-C509



## FEATURES

Main frame, three spray and three baking paint  
The rider Qiaoshan has the same armrest, with double bottle cage, mobile phone holder, PVC advanced dipping process, front and rear adjustable Resistance system Top brake system, cowhide The seat tube can be adjusted up and down  
Cushion Taiwan Weile Professional Mountain Bike Cushion Pedal Taiwan JD037 high-grade commercial aluminum alloy bearing pedal  
Axis diameter 25MM  
Product assembly size 1270\*500\*890MM Packing size 1110\*265\*890MM  
Flywheel 20KG aluminum flywheel Transmission 5PK belt for industrial grade  
Bottle cage PVC high-grade dipping double bottle cage Gross/net weight 73kg/67kg  
Capacity:150kg

SPIN BIKE COMMERCIAL

HCC-SP-D501



## FEATURES

Main frame, three spray and three baking paint  
The rider Qiaoshan has the same armrest, with double bottle cage, mobile phone holder, PVC advanced dipping process, front and rear adjustable Resistance system Top brake system, cowhide, magnetic resistance adjustment  
The seat tube can be adjusted up and down  
Cushion Taiwan Weile Professional Mountain Bike Cushion Pedals Kalong high-grade commercial aluminum bearing pedals with SPD professional cycling shoe buckle  
Axis diameter 25MM  
Product assembly size 1260\*545\*1225MM Packing size 1055\*270\*955MM  
Flywheel 16KG reluctance flywheel Transmission 5PK belt for industrial grade  
Bottle cage PVC high-grade dipping double bottle cage Gross/net weight 68kg/62kg  
Capacity:135kg



# HALTER SPINNING BIKE

COMMERCIAL SPIN BIKE

HCC-SP-D577



## FEATURES

Riders race handrails, dipping process  
Resistance system: Frictional wool stick, top brake system; Seat cushion tube can be adjusted up and down, front and back, electroplating  
Seat cushion black padded mountain bike seat cushion; All aluminum pedal  
Product assembly size 1185\*530\*1320mm Packing size 1075\*230\*940mm  
Flywheel 20KG cast iron chrome-plated flywheel Transmission 5PK belt for industrial grade Bottle cage ABS double bottle cage  
Electronic watch rate, hand-held heartbeat, time, distance, calorie  
Gross/net weight 61kg/56kg Capacity:100kg

COMMERCIAL SPIN BIKE

HCC-SP-D578



## FEATURES

Riders race handrails, dipping process  
Resistance system: Frictional wool stick, top brake system; Seat cushion tube can be adjusted up and down, front and back, electroplating  
Seat cushion black padded mountain bike seat cushion; All aluminum pedal  
Product assembly size 1185\*530\*1320mm Packing size 1075\*230\*940mm  
Flywheel 20KG cast iron chrome-plated flywheel Transmission 5PK belt for industrial grade Bottle cage ABS double bottle cage  
Electronic watch rate, hand-held heartbeat, time, distance, calorie  
Gross/net weight 61kg/56kg Capacity:100kg

# HALTER STAIR CLIMBER



# HALTER STAIR CLIMBER

STAIR MASTER

HCC-YJSM



## FEATURES

Step size: 56\*23.5\*22cm 7  
Speed: 15 steps/munites ----164 steps/munites  
Display: Time, Heart rate, Distance  
Max user weight: 160kg N.W.190kg .3  
G.W: 240kg  
Size: 1460\*820\*2080mm Package size: 1370\*960\*1300mm

CLIMBER

HCC-YHF



## FEATURES

Climber  
Specification (length \* width \* height): 1950\*1010\*1960mm Net weight: 340kg  
Gross weight: 380kg Input power: 220V/110V Motor power: 750W





**DUMBBELL**

# HALTER DUMBBEL

RUBBER HEX BUMB BELL

DRB-0001

## SPECIFICATION

Six-sided hex design prevents rolling. rubber casing with a solid cast iron core  
 Six-sided hex design prevents rolling. rubber casing with a solid cast iron core  
 Heavy-duty Rubber Encased Heads: minimize noise, floor damage, and wear and tear on the dumbbells themselves.  
 Easy-grip, ergonomic Chrome Handle with diamond knurling to reduce hand fatigue



ROUND HEAD RUBBER DUMBBELL

DBRH002

## SPECIFICATION

Finishing: Bright chrome Handle  
 Weight Range: 2.5 kg to 50 kg in 2.5 kg increment / 5 lbs to 110 lbs in 5 lbs increment  
 Length of handle: 130 mm  
 Dia of handle: 32 mm



RUBBER DUMBBELL-PREMIUM QUALITY

DBRH003

## SPECIFICATION

Finishing: Hard chrome Handle  
 Weight Range: 60---2.5, 5, 7.5KG increment  
 60---2, 4, 6kg 2kg increment 120-5lb, 5lb increment  
 Length of handle: 151 mm  
 Dia of handle: below 22kg, dia: 32 mm, above 22.5kg, dia: 34mm  
 Tolerance of weight:  $\pm 2\%$   
 MOQ: 10PC/SIZE



RUBBER ROUND HEAD BARBELL FIXED WEIGHT STRAIGHT

BSR001S

## SPECIFICATION

Handle finished: Bright chrome  
 Material: Steel + rubber  
 Weight range: 2.5 kg to 50kg in 2.5 kg increment  
 lb to 120 lb in 5 lb increment 5  
 Bar size: 1000mm  
 Dia of handle: 32mm  
 Tolerance of weight:  $\pm 3\%$



RUBBER ROUND HEAD BARBELL FIXED WEIGHT CURL

BSR001C

## SPECIFICATION

Handle finished: Bright chrome  
 Material: Steel + rubber  
 Weight range: 2.5 kg to 50kg in 2.5 kg increment  
 5 lb to 120 lb in 5 lb increment  
 Bar size: 1000mm  
 Dia of handle: 32mm  
 Tolerance of weight:  $\pm 3\%$



URETHANE ROUND HEAD BARBELL FIXED WEIGHT STRAIGHT

BSC001S

## SPECIFICATION

Handle finished: Hard chrome  
 Material: Steel + CPU  
 Weight range: 10--55KG 5kg increment  
 Bar size: 890mm  
 Dia of handle: 32mm  
 %Tolerance of weight:  $\pm 2\%$   
 MOQ: 4PCS/SIZE  
 Logo: Laser logo free





# HALTER DUMBBELL

URETHANE ROUND HEAD BARBELL  
FIXED WEIGHT CURL

## BSC001C

### SPECIFICATION

Handle finished: Hard chrome  
Material: Steel +CPU  
Weight range: 55--10KG 5kg increment  
Bar size: 890mm  
Dia of handle: 32mm  
Tolerance of weight: %2±  
MOQ: 4PCS/SIZE  
Logo: Laser logo free



URETHANE ROUND HEAD  
DUMBBELL (CPU)

## DBC001

### SPECIFICATION

Handle type: Knurled Straight handle  
Handle finish: Hard chromed finishing  
Weight Range: 2.5,5,7.5--70KG .25kg increment / 2, 4, 6 --- 50KG 2kg increment / 5, 10, 15 --- 120LB, 5lb increment / 1, 2, 3-10KG  
Length of handle : 151mm  
Dia of handle: 32MM up to 22kg, 34MM for anything over 22kg 28mm for 1kg  
%Tolerance: +/-2  
Logo: laser / customized



URETHANE ROUND HEAD  
DUMBBELL (CPU)

## DBC002

### SPECIFICATION

Handle type: Knurled Straight handle  
Handle finish: Hard chromed finishing  
Weight Range: 50--2.5,5,7.5KG 2.5kg increment 50--2.4,6KG 2kg increment  
Length of handle : 151mm  
Dia of handle: 32MM up to 22kg, 34MM for anything over 22kg 28mm for 1kg  
Tolerance: %2±  
Logo: laser / customized



URETHANE 12-SIDED  
DUMBBELL (CPU)

## DBC003

### SPECIFICATION

Handle type: Knurled Straight handle  
Handle finish: Hard chromed finishing  
Weight Range: 2.5--60KG 2.5kg increment ---50KG 2kg increment 2  
Length of handle: 151mm  
Dia of handle: 32mm up to 22kg, 3mm for anything over 22kg 28mm for 1kg  
Tolerance: ±2%  
Logo: laser / customized



URETHANE ROUND HEAD  
DUMBBELL (TPU)

## DBT001

### SPECIFICATION

Handle type: Knurled Straight handle  
Handle finish: Hard chromed finishing  
Weight Range: 60--2.5,5,7.5KG 2.5kg increment 50--2.4,6KG 2kg increment, 150--5,10,15LB 5lb increment  
Length of handle: 151mm  
Dia of handle: 32mm up to 22kg, 34mm for anything over 22kg 28mm for 1kg  
Tolerance: 2%±  
Logo: laser / customized



VINYL DUMBBELL - HEX

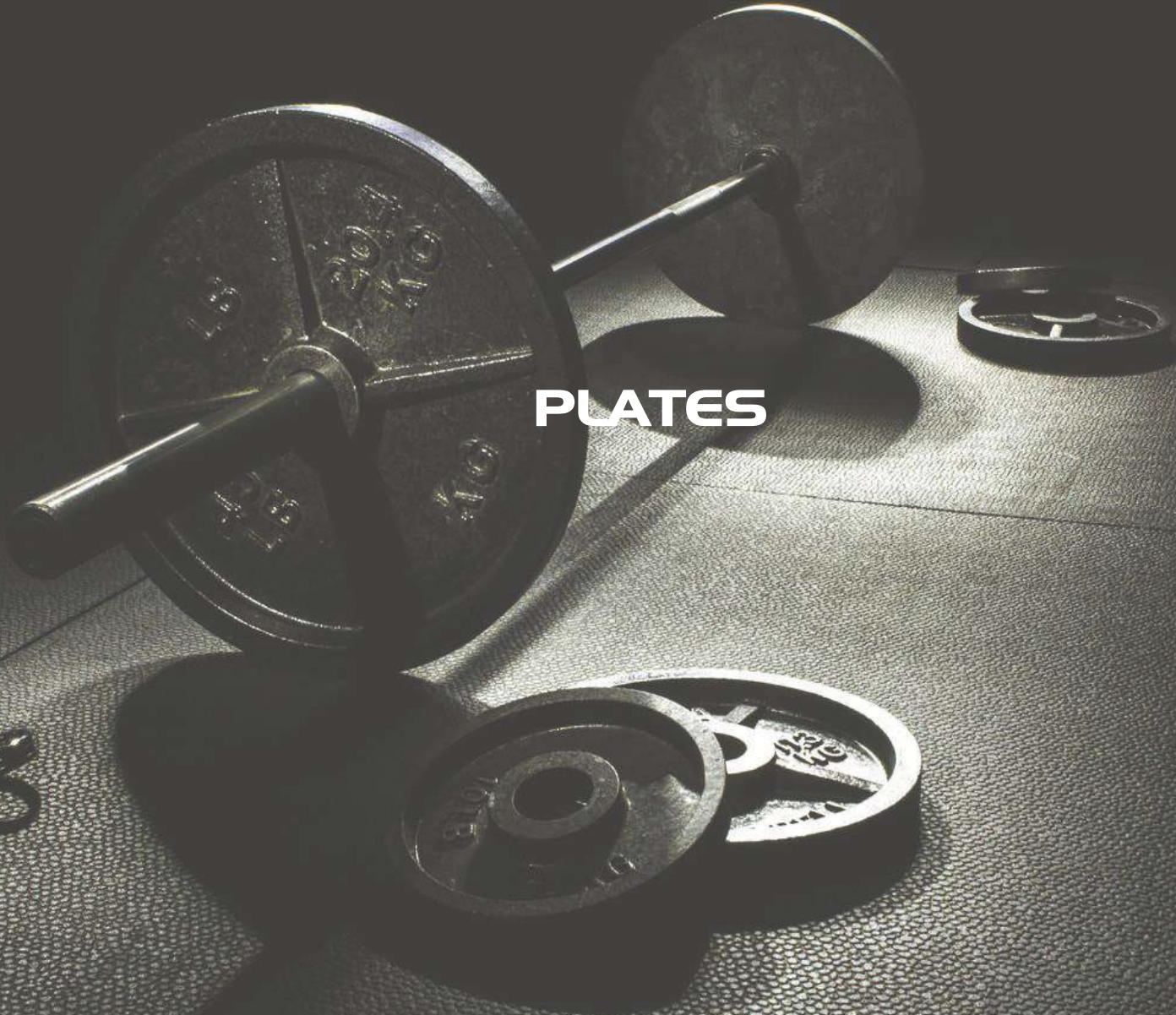
## DBV001

### SPECIFICATION

Handle finished: Vinyl Coated  
Material: cast iron+ pvc  
Length of handle: 140mm  
Dia of handle: 30mm  
Weight Range: 0.5-6kg  
Color: red/blue/pink/purple/green/black







**PLATES**

# HALTER PLATES

12 -SIDED RUBBER PLATES

## WPR001

### SPECIFICATION

Material: cast iron with rubber coating  
 Dia of hole: 51 mm  
 Weight Range: 25 ,20 ,15 ,10 ,5 ,2.5 ,1.25 kg  
 45 ,35 ,25 ,10 ,5 ,2.5lb  
 Tolerance: 3%±



12 -SIDED RUBBER PLATES

## WPR001M

### SPECIFICATION

Material: cast iron with rubber coating  
 Dia of hole: 51 mm  
 Weight Range: 1.25, 2.5, 5, 10, 15, 20, 25 kg  
 45lb ,35 ,25 ,10 ,5 ,2.5  
 Tolerance: ±3%



TRIGRIP RUBBER PLATES

## WPR002

### SPECIFICATION

Handle finished: Hard chrome  
 Material: Steel +CPU  
 Weight range: 55--10KG 5kg increment  
 Bar size: 890mm  
 Dia of handle: 32mm  
 Tolerance of weight:%2±  
 MOQ: 4PCS/SIZE  
 Logo: Laser logo free



URETHANE ROUND HEAD  
 DUMBBELL (CPU)

## WPR003

### SPECIFICATION

Material: cast iron with rubber coating  
 Dia of hole: 51 mm  
 Weight Range: 2.5/5 /10/15/20/25KG  
 Tolerance: ±3%



TRIGRIP RUBBER PLATES

## WPR004

### SPECIFICATION

Material: cast iron with rubber coating  
 Dia of hole: 51 mm  
 Weight Range: 25 ,20 ,15 ,10 ,5 ,2.5 ,1.25 kg  
 Tolerance: ±



VIRGIN RUBBER PLATES -  
 TRIP HANDGRIPS, BLACK

## WPHR001

### SPECIFICATION

Material: Cast Iron, nature Rubber Stainless insert  
 Dia of hole: 50.8 mm  
 Weight Range: 1.25/2.5/5/10/15/20/25KG  
 10pcs/size  
 Tolerance: ±2%





# HALTER PLATES

URETHANE ROUND HEAD  
DUMBBELL (TPU)

## WPHR002

### SPECIFICATION

Material: Cast Iron, nature Rubber Stainless insert  
Dia of hole: 50.8 mm  
Weight Range: 25/20/15/10/5/2.5/1.25KG  
10pcs/size  
Tolerance:  $\pm 2\%$



VIRGIN RUBBER PLATES -  
TRIP HANDGRIPS, BLACK

## WPHR003

### SPECIFICATION

Material: Cast Iron, nature Rubber Stainless insert  
Dia of hole: 50.8 mm  
Weight Range: 1.25/2.5/5/10/15/20/25KG  
10pcs/size  
Tolerance:  $\pm 2$



URETHANE WEIGHT  
PLATES (CPU)

## WPC001

### SPECIFICATION

Material: polyurethane  
Stainless steel insert ring  
Dia of hole: 50.8 mm  
Weight Range: 1.25kg 2.5kg 5kg 10kg 15kg  
20kg 25kg  
55/45/35/25/10/5/2.5LB  
Tolerance:  $2\% \pm$



URETHANE WEIGHT PLATES (CPU)

## WPC002

### SPECIFICATION

Material: polyurethane  
Stainless steel insert ring  
Dia of hole: 50.8 mm  
Weight Range: 1.25/2.5/5/10/15/20/25KG  
%Tolerance:  $\pm 2\%$



WEIGHT PLATES ( TPU )

## WPC003

### SPECIFICATION

Material: polyurethane  
Stainless steel insert ring  
Dia of hole: 50.8 mm  
Weight Range: 25/20/15/10/5/2.5/1.25KG  
Tolerance:  $\pm 2\%$



WEIGHT PLATES ( TPU )

## WPT001

### SPECIFICATION

Material: TPU  
Stainless steel insert ring  
Dia of hole: 50.8 mm  
Weight Range: 1.25/2.5/5/10/15/20/25KG  
Tolerance:  $\pm 2$





# HALTER PLATES

HI IMPACT PLATES - BLACK

## BPR001

### SPECIFICATION

Material : Rubber  
 Crumbs+Adhesive+Stainless steel 304 Inserts  
 Diameter: 450MM / 17.72" (IWF Standard).  
 Collar Opening: 0.2± 50.60mm / 0.008±"1.99"  
 Stainless Steel Weight Range: 15 ,10 ,5 ,2.5 ,25 ,20 kg /10lb, 15lb, 25lb, 35lb, 45lb, 55lb,  
 Weight Tolerance: +/- %1 of claimed weight



HI-TEMP / CRUMBS PLATES WITH COLOR NUMBER

## BPRH001

### SPECIFICATION

Material : Rubber Crumbs+Adhesive+Stainless steel 304 Inserts  
 .(Diameter: 450MM / 17.72" (IWF Standard)  
 "Collar Opening: 50.60 ±0.2mm / 1.99"±0.008  
 Stainless Steel Inserts  
 Weight Range:Range:2.5, 5, 7.5, 10, 15, 20, 25 ,kg/10lb, 15lb, 25lb, 35lb, 45lb, 55lb  
 Weight Tolerance: +/- 1% of claimed weight



RUBBER BUMPER PLATES

## BPR002

### SPECIFICATION

Material : NR+SBR+ Stainless steel 304 Inserts  
 Diameter: 450MM / 17.72" (IWF Standard).  
 Collar Opening: 0.2-/+ 50.60mm / 0.008-/+ "1.99"  
 Stainless Steel Inserts  
 Weight Range: 25 ,20 ,15 ,10 ,5 kg / ,15 ,10 ,55 ,45 ,35 ,25 lb  
 Weight Tolerance: +/- %2 of claimed weight



RUBBER BUMPER PLATES (MULTICOLOR)

## BPR002M

### SPECIFICATION

Material : NR+SBR+ Stainless steel 304 Inserts  
 .(Diameter: 450MM / 17.72" (IWF Standard)  
 "Collar Opening: 50.60 ±0.2mm / 1.99"±0.008  
 Stainless Steel Inserts  
 Weight Range: 5, 10, 15, 20, 25 kg /10, 15, 25, 35, 45, 55 lb  
 Weight Tolerance: +/- 2% of claimed weight  
 /Color kg: gray/green/yellow/blue/red  
 lb: green/orange/yellow/blue/red



COMPETITION BUMPER PLATE

## BPR003

### SPECIFICATION

Material : NR+SBR%60  
 Outside Diameter: 450MM  
 Inside Diameter: 0.1± 50.40mm / 0.004±"1.98"  
 Insert Type: iron Disc, Chrome Plated  
 Weight Range: 25 ,20 ,15 ,10 kg  
 55 ,45 ,35 ,25 lb  
 Weight tolerance: +/- 10 grams of claimed weight



VIRGIN RUBBER PLATES - TRIP HANDGRIPS, BLACK

## WPHR001

### SPECIFICATION

Material : NR+SBR%60  
 Outside Diameter: 450MM  
 "Inside Diameter: 50.40 ±0.1mm / 1.98"±0.004  
 Insert Type: iron Disc, Chrome Plated  
 Weight Range: 10, 15, 20, 25 kg  
 lb 55 ,45 ,35 ,25  
 Weight tolerance: +/- 10 grams of claimed weight  
 Color: green/yellow/blue/red



# HALTER PLATES

FRACTIONAL PLATES

## FP-01

### SPECIFICATION

Material: 45 # steel + Rubber  
Insert Type: iron Disc, Chrome Plated  
Weight Range: 5 ,2.5 ,2 ,1.5 ,1 ,0.5kg / ,2.5  
10 ,5 lb



FRACTIONAL PLATES

## FP-02

### SPECIFICATION

Material: Rubber  
Insert Type: iron Disc, Chrome Plated  
Weight Range: 1.25, 2.5 kg





**HALTER**



**BARBEL**



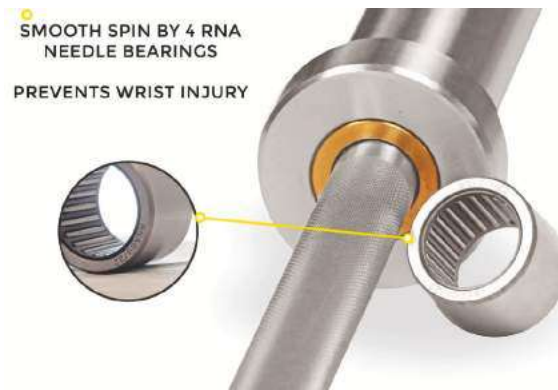
# HALTER BARBEL

WOMEN'S BARBELL

## OB25

### SPECIFICATION

Bar Type: Women's Barbell  
Bar Weight: 15kg  
Shaft Diameter: 25mm  
Knurl Marks: 1.2mm  
Knurl: standard  
Knurl Type: Dual (IPF+IWF)-6-  
Center Knurl: No  
Whip: good  
Bar Length: 2010mm  
Loadable Sleeve Length: 325mm  
Shaft Coating: Hard Chrome  
Sleeve Coating: Hard Chrome



MEN'S BARBELL

## OB2801

### SPECIFICATION

Bar Type: Men's Barbell  
Bar Use: multi  
Bar Weight: 20kg  
Shaft Diameter: 28mm  
Knurl Marks: 1.2mm  
Knurl: standard  
Knurl Type: Dual (IPF+IWF)-6  
Center Knurl: No  
Whip: good  
Bar Length: 2200mm  
Loadable Sleeve Length: 415mm  
Shaft Coating: Hard Chrome

SMOOTH SPIN BY 10 HK NEEDLE BEARINGS  
PREVENTS WRIST INJURY



MEN'S BARBELL

## OB2802

### SPECIFICATION

Bar Type: Men's Barbell  
Bar Use: multi  
Bar Weight: 20kg  
Shaft Diameter: 28mm  
Knurl Marks: 1.2mm  
Knurl: standard  
Knurl Type: Dual (IPF+IWF)-6-  
Center Knurl: No  
Whip: good  
Bar Length: 2200mm  
Loadable Sleeve Length: 415mm  
Shaft Coating: Chrome

SMOOTH SPIN BY 10 HK NEEDLE BEARINGS  
PREVENTS WRIST INJURY



WEIGHTLIFTING

## OB2803

### SPECIFICATION

Bar Type: Men's Barbell  
Bar Use: weightlifting  
Bar Weight: 20kg  
Shaft Diameter: 28mm  
Knurl Marks: 1.5mm  
Knurl: sharp  
Knurl Type: IWF-4  
Center Knurl: No  
Whip: Best  
Bar Length: 2200mm  
Loadable Sleeve Length: 415mm  
Shaft Coating: Chrome

SMOOTH SPIN BY 4 RNA NEEDLE BEARINGS  
PREVENTS WRIST INJURY



SQUAT BAR

## OB32PRO

### SPECIFICATION

Bar Type Man's bar  
Bar use Squat Bar  
Bar Weight 25kg  
Shaft Diameter 32mm  
Knurl Marks: 1.5mm  
Knurl: Sharp  
Knurl Type IPF3-  
Full aggressive knurling across the bar  
Whip Stiff  
Bar Length 2400mm  
Loadable Sleeve Length 425mm  
Shaft Coating Black Phosphate



POWER LIFTING

## OB29PRO

### SPECIFICATION

Bar Type: Man's bar  
Bar use: power lifting  
Bar Weight 20kg  
Shaft Diameter 29mm  
Knurl marks: 1.5mm  
Knurl: sharp  
Knurl Type IPF-5  
Center Knurl Yes  
Whip Stiff  
Bar Length 2200mm  
Loadable Sleeve Length 415mm  
Shaft Coating Black Phosphate

SMOOTH SPIN BY 4 NK NEEDLE BEARINGS  
PREVENTS WRIST INJURY



# HALTER BARBEL

DEADLIFT BAR

## OB27PRO

### SPECIFICATION

Bar Type Man's bar  
Bar use: deadlifting  
Bar Weight 20kg  
Shaft Diameter 27mm  
Knurl marks: 1.5mm  
Knurl: Sharp  
Knurl Type IPF4-  
Center Knurl no  
Whip Best  
Bar Length 2330mm  
Loadable Sleeve Length 425 mm  
Shaft Coating Black Phosphate



EZ BAR

## CB47

### SPECIFICATION

Bar Type EZ BAR  
Bar Weight 10kg  
Shaft Diameter 28mm  
Knurl Depth 1.2mm  
Bar Length 1200mm  
Loadable Sleeve Length 170mm  
Shaft Coating hard Chrome  
Sleeve Coating hard Chrome  
Bearings/Bushings 2 Needle Bearings  
Tensile Strength 45,000 PSI  
Max load 300lbs/136kg



SAFETY SQUAT BAR

## SSB01

### SPECIFICATION

Material: A3 steel  
Finishes: Bright Chrome  
Bearing: 2 ball bearing  
Internal diameter: 28 mm  
Weight: 22 kg  
Handle angle: 90 °  
Tolerance: %1±  
Capacity: 700LB



SAFETY SQUAT BAR

## SSB02

### SPECIFICATION

Material: A3 steel  
Finishes: Bright Chrome  
Bearing: 2 ball bearing  
Internal diameter: 28 mm  
Weight: 22 kg  
° Handle angle: 35  
%Tolerance: ±1  
Capacity: 700LB



OLYMPIC SWISS BAR

## OSB01

### SPECIFICATION

Material: A3 steel  
Finishes: bright chrome  
Tolerance: %1±  
L ength: 2118mm  
Weight: 35 kg  
Capacity: 1000 LB



HEX 56

## HEX 56

### SPECIFICATION

Material: A3 steel  
Finishes: bright chrome  
Internal diameter: 28 mm  
Length:1420mm  
%Tolerance: ±1  
Capacity: 500 LB



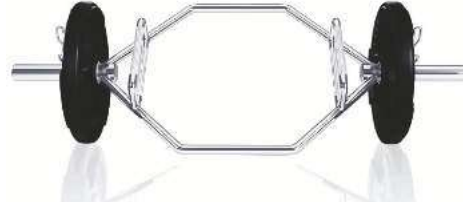
# HALTER BARBEL

HEX 72

## HEX72

### SPECIFICATION

Material: A3 steel  
Finishes: bright chrome  
Internal diameter: 28 mm  
Bearing: 2  
Tolerance:  $\pm 1$   
Length: 1820mm  
Bearing: 2 ball bearing  
Capacity: 500LB



CURL BAR

## CB4701

### SPECIFICATION

Material: A3 steel  
Finishes: bright chrome  
Bearing: 2 ball bearing  
Internal diameter: 28 mm  
Weight: 9.6 kg  
%Tolerance:  $\pm 1$   
Capacity: 500 LB



CURL BAR

## CB4702

### SPECIFICATION

Material: A3 steel  
Finishes: bright chrome  
Bearing: 2  
Internal diameter: 28 mm  
Weight: 10 kg  
Tolerance:  $\pm 1$   
Capacity: 500 LB



EZ BAR

## TB01

### SPECIFICATION

Material: A3 steel  
Finishes: bright chrome  
%Tolerance:  $\pm 1$   
L length: 865mm  
Weight: 20 kg  
Internal diameter: 195mm





A black and white photograph of a woman in athletic wear performing a backbend exercise on a large exercise ball. She is lying on her back with her arms extended overhead and her feet on the floor. The exercise ball is positioned under her lower back. The background is dark and textured.

**FUNCTIONAL TRAINER**

# HALTER FUNCTIONAL TRAINER

URETHANE KETTLEBELL

KBC001

**SPECIFICATION**

Handle: Hard chrome finishing  
 Weight Range: 40----9.10.11.12KG  
 Weight Tolerance: +/- %2



URETHANE KETTLEBELL

KBC002

**SPECIFICATION**

Handle: Hard chrome finishing  
 Weight Range: 9.10.11.12----40KG  
 Weight Tolerance: +/- 2%



RUBBER KETTLEBELL (KG)

KBR001

**SPECIFICATION**

Handle: Hard chrome finishing  
 Weight Range: 40----9.10.11.12KG  
 Weight Tolerance: +/- %2

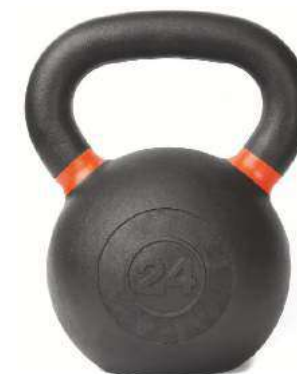


CAST IRON KETTLEBELL

KBI001

**SPECIFICATION**

Handle: bright chrome finishing  
 Weight Range: 4, 6, 8, 10, 12, 16, 18, 20, 24, 28, 32, 36, 40, 44, 48kg  
 9lb, 13lb, 18lb, 26lb, 35lb, 44lb, 53lb, 62lb, 70lb, 80lb, 88lb, 97lb, 106lb, 124lb, 150lb  
 Weight Tolerance: +/- 2%



SPEED JUMP ROPE

JR0601

**SPECIFICATION**

Material: pp handle + Steel wire with pvc cover  
 bearings inside 2 Bearing connection  
 3m :Length  
 2.5mm :Diameter  
 15cm :Length of handle  
 100g :.N.W  
 Color: Blue, black, red, green, pink



SPEED JUMP ROPE

JR0802

**SPECIFICATION**

Material: Silicone gel handle+ Steel wire with PVC cover  
 Length: 3m  
 Bearing connection  
 Diameter: 2.5mm  
 Length of handle: 12cm  
 N.W.: 135g  
 Color: black, red



# HALTER FUNCTIONAL TRAINER

SPEED JUMP ROPE

## JR1603

### SPECIFICATION

Material: Aluminum handle+ Steel wire with PVC cover  
 Bearing connection  
 Length: 3m  
 Diameter: 2.5mm  
 Length of handle: 18cm  
 Bearing connection  
 N.W.: 150g  
 Color: blue, red, golden, purple, silver, black



SPEED JUMP ROPE

## JR2204

### SPECIFICATION

Material: Aluminum + Steel wire with PVC cover  
 Bearing connection  
 Length: 3m  
 Diameter: 2.5mm  
 Length of handle: 16cm  
 N.W.: 150g  
 Color: blue, golden, silver, black, red



SPEED JUMP ROPE

## JR2305

### SPECIFICATION

Material: Aluminum handle + Steel wire with PVC cover  
 Bearing connection  
 Length: 3m  
 Diameter: 2.5mm  
 Length of handle: 17cm  
 N.W.: 210g  
 Color: blue, golden, silver, black, red



SPEED JUMP ROPE

## JR2406

### SPECIFICATION

Material: Foam handle+ Steel wire with PVC handle  
 (bearing connection (for competition 4  
 Length: 3m  
 Diameter: 2.5mm  
 Length of handle: 16cm  
 N.W.: 115g  
 Color: blue, golden, silver, black, red



BARBELL SILICONE HAND GRIP

### SPECIFICATION

Material: Nylon  
 Outer diameter: 9cm  
 Inner diameter: 50mm  
 Color: red, blue, yellow, black, gray  
 N.W.: 360g

BC01



### SPECIFICATION

Material: Thermoplastic Rubber  
 Outer diameter: 7cm  
 Inner diameter: 50mm  
 Color: red, blue, yellow, black, gray  
 N.W.: 300g

BC02



BARBELL SILICONE HAND GRIP

### SPECIFICATION

Material: Nylon  
 Outer diameter: 9cm  
 Inner diameter: 50mm  
 Color: red, blue, yellow, black, gray  
 N.W.: 400g

BC03



### SPECIFICATION

Material: Aluminum alloy  
 Outer diameter: 9cm  
 Inner diameter: 50mm  
 Color: red, blue, gold, black, silver, red  
 N.W.: 340g

BC04





# HALTER FUNCTIONAL TRAINER

BARBELL SILICONE HAND GRIP

## MS01

### SPECIFICATION

Description: Massage stick  
Material: PP  
Length: 44cm  
Color: red, green, yellow, pink, black, gray  
N.W.: 220g



BARBELL SILICONE HAND GRIP

## AL01

### SPECIFICATION

Description: Fitness Agility Ladder  
Material: TPE  
Length: 12-rung long  
Color: green, yellow  
N.W.: 1.2kg



GYMNASTIC

## DSC01

### SPECIFICATION

Description: Soccer Fitness Training Sign Plate  
Diameter: 2ins  
Material: PE  
Length: 44cm  
Color: red, green, blue, orange, yellow  
N.W.: 25g



GYMNASTIC

## AL02

### SPECIFICATION

Description: Fitness Hex Agility Ladder  
Material: PP  
Length: 6-rung long  
Color: orange, yellow  
N.W.: 1.2kg



BARBELL SILICONE HAND GRIP

### SPECIFICATION

Description: Thick Fat Bar Grips  
Material: Silicone  
Length: 125mm  
External diameter: 50mm  
Inner diameter: 25mm  
N.W.: 480g

### SPECIFICATION

Description: Thick Fat Bar Grips  
Material: Silicone  
Length: 100mm  
External diameter: 50mm  
Inner diameter: 25mm  
N.W.: 400g

### SPECIFICATION

Description: Ball Silicone Hand Grip  
Material: Silicone

FBG02



FBG01



BBG01



BARBELL PAD

## BP02

### SPECIFICATION

Description: Barbell pad  
Material: NBR  
Dimensions: 44\*10\*10cm/17\*4\*4in  
Color: black, red  
N.W.: 219g



# HALTER FUNCTIONAL TRAINER

GYM RING

## GR01

### SPECIFICATION

Model: GR01  
 Description: Gym Ring  
 Material: Birch  
 Diameter : 23cm  
 Thickness of grip : 32mm  
 Belt size: 4.6m(Length)\* 3.8cm(width)  
 N.W.: 1.6kg



BARBELL SILICONE HAND GRIP

## SPECIFICATION

( Description: Glossy massage ball (single  
 Material: 100% Silicone  
 Length: 6.5cm  
 Color: blue, red, green, black, orange  
 N.W.: 135g

## SPECIFICATION

(Description: Glossy massage ball (double  
 Material: 100% Silicone  
 Length: 14cm  
 Color: blue, red, green, black, orange  
 N.W.: 310g

## SPECIFICATION

( Description: Pock massage ball (single  
 Material: TPE

LMB01



LMB02



LMB03



LMB04



WALL BALL

## WB01

### SPECIFICATION

1000D PVC Material: Outside Grid pattern  
 TARP PP Cotton cushioning, rubber grind  
 with iron shot core  
 "14/35CM :Diameter  
 kg 15 ,13 ,12 ,10 ,9 ,8 ,7 ,6 ,5 ,4 ,3 :Weight  
 Color:blac



WALL BALL

## WB03

### SPECIFICATION

Material: Outside Kevlar TARP PP Cotton  
 cushioning, rubber grind with iron shot core  
 "Diameter: 35CM/14  
 Weight: 3, 4, 5, 6, 7, 8, 9, 10, 12,13,14,15 kg



POWER BAG

## PB01

### SPECIFICATION

Material: Outside 1000D PVC TARP  
 compressed Cotton cushioning, Paper  
 Tube, iron sand bag  
 Diameter: 25cm  
 Weight: 25,30 ,5,10,15,20kg  
 Color:black



BULL BOOST BULGARIAN BAG

## BU01

### SPECIFICATION

Material: Outside 1000D PVC TARP rag  
 cushioning, iron sand bag  
 Weight: 5,10,15,20kg  
 Color: black, red, yellow



# HALTER FUNCTIONAL TRAINER

FITNESS TIRE

## GT01

### SPECIFICATION

Material: Mesh Leather + Tire + EVA  
 /31\*50\*103 /25cm\*40\*87 :Dimension  
 34\*60\*122  
 40.60.80kg :Weight  
 Color: green



FOAM JUMP BOX

## FPB02

### SPECIFICATION

Material: Material: Outside 1000D PVC TARP, compressed cotton cushioning  
 /Dimension: 90\*75\*7.5cm/90\*75\*15cm

30cm/90\*75\*45cm/90\*75\*60cm\*75\*90  
 Weight: 130kg  
 Color: green, blue red, black



PLYO SOFT BOX

## FPB03

### SPECIFICATION

Material: Material: Outside 1000D PVC TARP compressed cotton cushioning,  
 Dimension: 50\*60\*75cm/60\*50\*40cm  
 Weight: 50\*60\*75cm 30kg  
 60\*50\*40cm 17.5kg



WEIGHT VEST - ADJUSTABLE

## WV01

### SPECIFICATION

, Material: 1000D Nylon Oxford  
 Padding material: Iron shot  
 Weight: 10, 15, 20kg  
 Color: black



WEIGHT VEST - ADJUSTABLE

## WV02

### SPECIFICATION

Cover Material: 1000D Nylon Oxford  
 Padding material: iron block  
 Weight: 20, 30, 10kg  
 Color: black



MEDICINE BALL

## MB01

### SPECIFICATION

Material: Rubber  
 Diameter: black + purple : 1,2kg 190mm  
 3,4kg 216mm  
 6kg 241mm 7, 8, 9, 10kg 286mm ,5  
 black+red: 1,2kg 190mm 3,4,5kg  
 230mm  
 10kg 286mm ,9 ,8 ,7 ,6  
 Weight: 1, 2, 3, 4, 5, 6, 7, 8, 9, 10kg / 2, 4, 6, 8,  
 10, 12, 15lb  
 %Tolerance: ±3  
 Package: cartoon





# HALTER FUNCTIONAL TRAINER

MEDICINE BALL

## MB02

### SPECIFICATION

Material: Rubber  
Diameter: 230mm 3,4,5kg 190mm 1,2kg  
286mm 10kg .9 .8 .7  
10kg .9 .8 .7 .6 .5 .4 .3 .2 .1 :Weight  
15lb .12 .10 .8 .6 .4 .2  
Package: cartoon



## SB01

### SPECIFICATION

Material: Rubber  
Diameter: 23cm for 2kg-10kg, 28cm for 12-30kg, 33cm for 35-50kg, 36cm for 55-70kg, 38cm for 75-80kg, 23cm for 4lb-20lb, 28cm for 25-65lb, 33cm for 70-100lb, 36cm for 120-150lb  
Weight: 2-10kg, 1kg increment, 12kg, 15kg to 80kg, 5kg increment  
4-12lb, 2lb increment, 15lb-80lb, 5lb increment, 100lb, 120lb, 150lb  
Package: cartoon



SLAM BALL

## SBH01

### SPECIFICATION

Material: Rubber  
Diameter: 23cm for 2kg-10kg, 28cm for 30-12kg, 33cm for 50-35kg, 36cm for 70-55kg, 38cm for 80-75kg, 23cm for 4lb-20lb, 28cm for 65-25lb, 33cm for 100-70lb, 36cm for 150-120lb,  
Weight: 10-2kg, 1kg increment, 12kg, 15kg to 80kg, 5kg increment, 12-4lb, 2lb increment, 15lb-80lb, 5lb increment, 100lb, 120lb, 150lb,  
Package: cartoon



BATTLE ROPE

## BR01

### SPECIFICATION

Material: 1000D Nylon Oxford  
Padding material: Iron shot  
Weight: 10, 15, 20kg  
Color: black



PRO BATTLE ROPE

## BR01-2

### SPECIFICATION

Material: %100 polyester High Density, 600D oxford fibre cover  
Dia: 38mm  
Length: 9m, weight: 8.3kg  
Length: 12m, weight: 11kg  
Length: 15m, weight: 13kg  
Dia: 50mm  
Length: 9m, weight: 13kg  
Length: 12m, weight: 18kg  
Length: 15m, weight: 23kg  
Package: carton



CLIMBING ROPE

## CR02

### SPECIFICATION

Material: Jute  
Dia: 38mm  
Length: 3m, weight: 2.4kg  
Length: 5m, weight: 3.7kg  
Length: 6m, weight: 4.3kg  
Length: 9m, weight: 6.4kg  
Package: 3m, 1pc/carton 62\*11.5\*14.5cm  
5m, 1pc/carton 62\*22\*14cm  
6m, 1pc/carton 62\*22\*15cm  
9m, 1pc/carton 62\*25\*17cm



# HALTER FUNCTIONAL TRAINER

RESISTANCE LOOP EXERCISE BANDS

## RB01

### SPECIFICATION

natural latex %100 :Material  
 W) mm)50\* (L)500/600 :Size  
 0.05mm increment ,1.5mm-0.35 :Thickness  
 Other specifications can be customized



RESISTANCE BANDS / MONSTER BANDS - LENGTH 2080MM

## FPB02

### SPECIFICATION

Material: 100% natural latex  
 Size: 2080(L) \*4.5(thickness) mm  
 Width: 6.4/ 13/ 21/22/29/32/44/45/64/83/101mm  
 Other specifications can be customized



AEROBIC STEPPER

## ST90PP

### SPECIFICATION

Dimension: 90L\*32W (cm)  
 Adjustable from 15cm ,20cm and 25 cm for the height (3 Leveles )  
 Support blocks 5cm when placed in position  
 Material: PP  
 N.W. 25kg G.W. 28kg  
 Package: internal package: 16\*33\*91cm, external package: 79\*34.5\*92.5cm/5pcs



AEROBIC STEPPER

## WV01

### SPECIFICATION

(Dimension: 72L\*36W (cm)  
 Adjustable from 10cm,15cm and 20 cm for ( the height (3 Leveles  
 Support blocks 5cm when placed in position  
 Material: HDPE  
 N.W. 3.5kg G.W. 4.5kg  
 Package: 72.5\*37.5\*21.5cm/1 set



AEROBIC STEPPER

## ST110CPE

### SPECIFICATION

Dimension: 108L\*41.5W (cm)  
 Adjustable from 10cm,15cm and 20 cm for the height (3 Leveles )  
 Support blocks 5cm when placed in position  
 Material: HDPE  
 N.W. 8.5kg G.W. 9.5kg  
 Package: 21\*42\*109cm/1 set



AEROBIC STEPPER

## AST110PP

### SPECIFICATION

(Dimension: 110L\*34W (cm)  
 Adjustable from 20cm and 35 cm for the ( height (2 Leveles  
 Support blocks 5cm when placed in position  
 Material: PP  
 N.W. 12.5kg G.W. 13.5kg  
 Package: 112.5\*34.7\*21.2cm/1pc





**YOGA**





# HALTER YOGA

YOGA MATS - TPE

## SPECIFICATION

Material: TPE  
 W)cm)61 \* (L)183 :Dimension  
 cm 1 ,0.8 ,0.4,0.6 :Thickness  
 thickness 0.4 50g for+800g :Weight  
 Color: single color :Blue/yellow,./purple/pink  
 dual color: customized

## SPECIFICATION

Material: TPE  
 Dimension: 183(L) \* 61(W)cm  
 Thickness: 1 ,0.8 ,0.4,0.6 cm  
 Weight: 800g50+g for 0.4 thickness  
 Color: single color :Blue/yellow,./purple/pink  
 dual color: customized

YM01



YM01D



YOGA MATS - PVC

YM02

## SPECIFICATION

Material: TPE  
 Dimension: 183(L) \* 61(W)cm  
 Thickness: 0.4,0.6, 0.8, 1 cm  
 Weight: 800g+50g for 0.4 thickness  
 Color: single color :Blue/yellow,./purple/pink  
 dual color: customized



YOGA BALL-ANTI BURST

YB01

## SPECIFICATION

most 65 ,55 ,85cm ,75cm ,65cm ,55cm :Size  
 popular

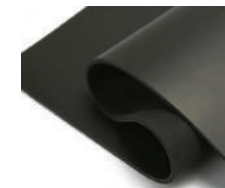


YOGA MATS -PU+RUBBER

YM03

## SPECIFICATION

Material: TPE  
 Dimension: 183(L) \* 61(W)cm  
 Thickness: 0.4,0.6, 0.8, 1 cm  
 Weight: 800g+50g for 0.4 thickness  
 Color: single color :Blue/yellow,./purple/pink  
 dual color: customized



EVA YOGA COLUMN

## SPECIFICATION

Material: High Density EVA  
 Dimension: 14\*33cm/14\*33cm/ 13\*33cm/  
 13\*33cm

FR13  
 33\*14cm



FR40  
 45\*14cm



FR10  
 33\*14cm



FR11  
 33\*14cm



FR43  
 45\*14cm



YOGA BALL-ANTI BURST

MB01

## SPECIFICATION

Size: 55cm, 65cm, 75cm, 85cm,95cm 55, 65  
 most popular





**HALTER**<sup>®</sup>  
FITNESS



**GULF** جلف أثلتيكس  
ATHLETICS

**+973 33632662 | +973 13636000**

**Store 62, Building 3427, Road O185, Block 701, Tubli**

**Kingdom of Bahrain**

**support@gulfathletics.com**

**gulfathletics.com**