



Gymleco

Product catalog
2019



SCAN FOR MACHINES



SCAN FOR CARDIO



SCAN FOR ACCESSORIES



SCAN FOR GULF ATHLETICS CATALOGUE



Sweden 1994

All started in a small kitchen, South of Stockholm, in **Sweden year 1994**. It was the idea of providing the market with affordable fitness equipment that Gymleco was started. The ambition was to develop totally maintenance free strength-training equipment with high functionality and quality. The equipment would be borne by the muscle throughout the movement, without a negative impact on the joints. This is so that all could work out better and longer.

Today we are located in the capital of Sweden, Stockholm. Under the same roof you can find the Head Office, production, warehouse and showroom. This gives us the opportunity to work customer-focused, have a good communication and give good and, above all, prompt service to you.

"Our mission is to make, not only Sweden, but the world healthier."

- Kari Jernvall
Founder and Creative Director





Family owned with a passion for innovation

Since the start, we have focused on designing unique and functional equipment with long lifespan and without maintenance needs. We truly believe in our own design and construction, with other words: No copies.

Gymleco offer products with Nordic design and high quality. Discrete self-manufactured details, durable and well thought-out. Machines are always supplied assembled, but beneath the surface hiding advanced mechanics that needs to be adjusted by a trained fitter.



Gymleco is family owned and we strive every day closer to the vision of a healthier world. We stand behind the product development and create our Swedish equipment with proper function and movement combined with ease of use.

Everyone should be able to workout right with Gymlecos exercise equipment. That is why our products are designed so that the movements are properly to help you get more out of your workout whether you are a beginner or an athlete.

With our own manufacturing we can shorten the delivery time, and it also provides an opportunity for you as a customer to order custom-made and customized solutions that are not in the normal range.

Details

that together creates a perfect entirety

1. Stable designs with genuine swedish quality. Every machine is designed and manufactured in Sweden with decades of experience. Our equipment has a good looking and clean design.
2. Every machine comes with an easy to read instructions board in English. Our instruction board is indestructible, unlike those made of plastic or stickers, which are destroyed very fast. Our instruction board is made of aluminium with pictures that shows start and stop position and stretch suggestion, and describes with text and pictures which muscles that are being exercised and connected.
3. Probably the best looking weight stacks on the market and the most functional with low weight interval. The chromed weight stacks with distinctly engraved and black colored kilo number that are engraved in rising succession. The chromed treatment and the engraved kg number will look as good after ten or twenty years. Special bump absorbing discs are lying between each weight plate to allow shock absorbent and a more quiet and softer exercise. In the bottom of the weight stack, there's two shock absorbing springs.
4. No more trouble with wires! The system in our equipment is called Poweband™. This belt has many advantages compared to wire constructions, such as: low friction, softer and more comfortable training, the life is much longer, keeps clean, won't break without warning, enables better, smoother and more good looking construction. The belt is always stretched and won't draw out on the length, won't jump out of it's path and doesn't entangle itself as wires do.
5. Our unique patent applied for belt tensioner together with correctly designed wheels will guarantee optimal function and endlessly long life for all details. The wheels of the belt has double bearings that won't need any maintenance. Furthermore, the design of the wheels automatically ensures that the belt (PowerBand™) is centralized.
6. With our cam shaft the weight load changes after the body's own strength curve. Due to that, the muscle perceive the weight as equally heavy throughout the entire motion. The old systems with a cam segment don't give good function but still, new machines with this obsolete system are being constructed. Each camarm's length is specially adapted to every machine. (Biomechanics = the muscle's changed strength during the entire motion.)
7. The weight stack bars are solid and treated to allow minimal friction and in order to demand little maintenance. The bars won't bend.
8. Rubber covered handles with a good looking knob in the end. Antiseptic rubber with very high firmness and with 10 years guarantee.
9. Gymleco's steel profiles and welding joints have our lifetime guarantee. That's why we can guarantee that the firmness in the exercise equipment is the best.

10. Ergonomic and comfortable. The pads are of the highest quality and come in a wide range of colors. Furthermore, the pad is designed and constructed to provide full stability.

11. The cushion cover can be delivered with your logo choice.

12. We use flange bearings on our equipment which provide maintenance free operation and come with a lifetime guarantee. These bearings provide the least friction and highest firmness.

13. We prioritize quality and finish on every machine.

14. Color choice can be customized on any piece for a custom appearance. We have hundreds of different color options that allow you to provide the gym experience you desire. At Gymleco we use environmentally friendly products and steam wash.

15. The stack covers have an asthetically pleasing design that adds to the overall finish while also providing protection. The stack covers are also available in a short version that covers the height of the weight stack.

No more trouble with cables! We work with Powerband which are softer, lower friction and won't break without warning.

All of our machines have an easy to read instruction board.

We prioritize high quality and finish in every detail.

Cushion cover can be ordered with your logo choice.

Equipment bearings are maintenance free.

The best looking weight stacks on the market also provide easy selection of low weight intervals.

Our cushions are of the highest quality and designed to be ergonomic and comfortable.

Our patent applied for belt tensioner combined with strategically designed wheels guarantees optimal function and performance of all components.


 Stable designs made by Sweden. Every machine is designed in Sweden and manufactured by ourself.

Plate loaded machines

Gymleco's plate loaded machines are maintenance free, need little space and have excellent functionality. The individual levers allow, according to extensive studies, the safest and most efficient training.

The Plate loaded machines also work incredibly well with rehabilitation. The levers are individually linked which results in better coordination between the right and left side which quickly increases muscle balance. Therefore, training is more efficient than with other exercise equipment. These also have a very low starting weight so that weights can be added in small increments if desired. The machines are designed to be easily adjustable for all types of trainers.

All the machines are available with black/gray frame and black/red cushions.

Read more about each product on our website: www.gymleco.com



*Model #082 Belt Squat Machine
with black frame*



Seated Row
Art.nr: 010

Length: 150 cm
Width: 75 cm
Height: 115 cm

Weight: 68,5 kg



Iso Lateral Pulldown
Art.nr: 011

Length: 156 cm
Width: 104 cm
Height: 199 cm

Weight: 136 kg



Iso Lateral Low Row
Art.nr: 012

Length: 120 cm
Width: 112 cm
Height: 174 cm

Weight: 112 kg



Iso Lateral High Row
Art.nr: 013

Length: 160 cm
Width: 110 cm
Height: 198 cm

Weight: 152 kg



Lateral Incline Press
Art.nr: 020

Length: 110 cm
Width: 113 cm
Height: 177 cm

Weight: 115 kg



Lateral Wide Chest
Art.nr: 021

Length: 180 cm
Width: 104 cm
Height: 137 cm

Weight: 101 kg



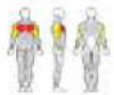


Iso Lateral Bench Press

Art.nr: 022

Length: 163 cm
Width: 133 cm
Height: 114 cm

Weight: 92,5 kg



Iso Lateral Shoulder Press

Art.nr: 030

Length: 130 cm
Width: 114 cm
Height: 149 cm

Weight: 111 kg



Iso Lateral Shoulder Rotation

Art.nr: 031

Length: 105 cm
Width: 114 cm
Height: 135 cm

Weight: 95,5 kg



Iso Lateral Upright Row

Art.nr: 032

Length: 120 cm
Width: 140 cm
Height: 94 cm

Weight: 79,2 kg

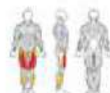


Leg Extension

Art.nr: 040

Length: 92 cm
Width: 120 cm
Height: 130 cm

Weight: 93 kg



Leg Curl Seated

Art.nr: 041

Length: 125 cm
Width: 100 cm
Height: 110 cm

Weight: 95,5 kg





Iso Lateral Leg Curl Standing

Art.nr: 042

Length: 96 cm
Width: 117 cm
Height: 123 cm

Weight: 83,5 kg



Leg Press

Art.nr: 043

Length: 226 cm
Width: 78 cm
Height: 180 cm

Weight: 130 kg



Hack Squat

Art.nr: 044

Length: 177 cm
Width: 85 cm
Height: 156 cm

Weight: 115 kg



Donkey Raise

Art.nr: 046

Length: 146 cm
Width: 65 cm
Height: 156 cm

Weight: 80,5 kg



Tibia Dorsi Flexion

Art.nr: 047

Length: 102 cm
Width: 60 cm
Height: 51 cm

Weight: 35,5 kg



Iso Lateral Biceps

Art.nr: 050

Length: 104 cm
Width: 120 cm
Height: 103 cm

Weight: 91 kg





Iso Lateral Triceps
Art.nr: 051

Length: 124 cm
Width: 102 cm
Height: 136 cm

Weight: 96 kg



Dip Press
Art.nr: 055

Length: 190 cm
Width: 70 cm
Height: 90 cm

Weight: 84 kg



Lateral Gluteus Rotation
Art.nr: 060

Length: 126 cm
Width: 119 cm
Height: 133 cm

Weight: 112,5 kg



Reverse Hyper
Art.nr: 061

Length: 116 cm
Width: 140 cm
Height: 144 cm

Weight: 87,5 kg



Reverse Hyper Pendulum
Art.nr: 062

Length: 137 cm
Width: 133,5 cm
Height: 111 cm

Weight: 100 kg





Hip Thrust

Art.nr: 066

Length: 160 cm

Width: 96 cm

Height: 124 cm

Weight: 109 kg



Abdominal Seated

Art.nr: 070

Length: 83 cm

Width: 114 cm

Height: 168 cm

Weight: 72 kg



Ab Roll up

Art.nr: 072

Length: 100 cm

Width: 96 cm

Height: 140 cm

Weight: 72,5 kg



Belt Squat Machine

Art.nr: 082

Length: 170 cm

Width: 100 cm

Height: 115 cm

Weight: 100 kg

Basic equipment

The 100-series consists of user-friendly exercise equipment that suits a wide range of customers ranging from commercial gyms to individuals and home gyms. As always the equipment is constructed to commercial specifications that have been tested and proven for 25 years.

At Gymleco we are always implementing user friendly designs such as the Incline Bench Press (Model #120 pictured below). All equipment are available with black/gray frame and black/red cushions. **Read more about each product on our website: www.gymleco.com**



Model #122R Bench Press
with black frame



Chin Rack for Cable Cross
Art.nr: 110K

Length: 140 cm
Width: 18 cm
Weight: 6,5 kg

Chins Rack with wall hold
Art.nr: 110V

Length: 145 cm
Width: 61,5 cm
Height: 42 cm
Weight: 9,5 kg



Chins Rack Detached
Art.nr: 111

Length: 126 cm
Width: 150 cm
Height: 240 cm
Weight: 73,5 kg



T-bar Row
Art.nr: 115

Length: 206 cm
Width: 86 cm
Height: 47 cm
Weight: 59,5 kg



Incline T-bar row with Breast Cushion
Art.nr: 116

Length: 219 cm
Width: 92 cm
Height: 109 cm
Weight: 74 kg



Seal Rowing Bench
Art.nr: 117

Length: 147 cm
Width: 122,5 cm
Height: 91 cm
Weight: 55 kg

The barbell is not included.





Incline Bench Press with foot support

Art.nr: 120

Length: 125 cm
Width: 150 cm
Height: 124 cm

Weight: 61 kg



Bench Press Stand with Fixed bar supports

Art.nr: 122F

Length: 123 cm
Width: 123 cm
Height: 124 cm

Weight: 53 kg



Bench Press Stand with Adjustable bar supports

Art.nr: 122R

Length: 125 cm
Width: 123 cm
Height: 104 cm

Weight: 37 kg

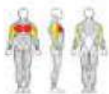


Bench Press with Safety Bars

Art.nr: 122RS

Length: 125 cm
Width: 124 cm
Height: 104 cm

Weight: 46 kg



Glute Ham Rise

Art.nr: 141

Length: 110 cm
Width: 60 cm
Height: 90 cm

Weight: 51 kg



Bench Press and Hack Squat

Art.nr: 142

Length: 128 cm
Width: 69 cm
Height: 75 - 163 cm

Weight: 31 kg

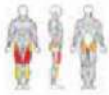




Sissy Squat
Art.nr: 144

Length: 77 cm
Width: 64 cm
Height: 57 cm

Weight: 27,5 kg



Calf Raise: Seated
Art.nr: 145

Length: 140 cm
Width: 60 cm
Height: 85 cm

Weight: 54,5 kg



Calf Block
Art.nr: 146

Length: 51 cm
Width: 31 cm
Height: 13 cm

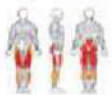
Weight: 5 kg



Squat Rack
Art.nr: 148

Length: 162 cm
Width: 100 cm
Height: 186 cm

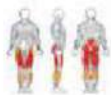
Weight: 65 kg



Power Rack
Art.nr: 149

Length: 122 cm
Width: 90 cm
Height: 205 cm

Weight: 76,5 kg



Curl bar rack
Art.nr: 150

Length: 70 cm
Width: 95 cm
Height: 127 cm

Weight: 22 kg





Scott curl bench seated
Art.nr: 151

Length: 101 cm
Width: 70 cm
Height: 95 cm

Weight: 35,5 kg



Scott curl bench standing
Art.nr: 152

Length: 63 cm
Width: 53 cm
Height: 92 cm

Weight: 26 kg



Fixed Bench 70 degrees
Art.nr: 153

Length: 76 cm
Width: 40 cm
Height: 92 cm

Weight: 19 kg



Stand for Decline Bench
Art.nr: 154

Length: 125 cm
Width: 170 cm
Height: 110 cm

Weight: 52,5 kg



Pushup Stand
Art.nr: 155

Length: 80 cm
Width: 80 cm
Height: 140 cm

Weight: 37 kg



Belly Back Adjustable
Art.nr: 162

Length: 102 cm
Width: 60 cm
Height: 117 cm

Weight: 41,5 kg





Belly Back 45 degrees

Art.nr: 162F45

Length: 102 cm
Width: 60 cm
Height: 117 cm

Weight: 38 kg



Belly Back 90 degrees

Art.nr: 162F90

Length: 102 cm
Width: 60 cm
Height: 104 cm

Weight: 36,5 kg



Belly Back Knee standing

Art.nr: 163

Length: 105 cm
Width: 59 cm
Height: 79 cm

Weight: 38 kg



Hip Thrust

Art.nr: 166

Length: 150 cm
Width: 73 cm
Height: 50 cm

Weight: 43,5 kg



**Abdominal Bench
(Romain Chair)**

Art.nr: 170

Length: 102 cm
Width: 58 cm
Height: 57 cm

Weight: 21 kg



Abdominal bench

Art.nr: 171

Length: 102 cm
Width: 58 cm
Height: 105 cm

Weight: 22 kg





Leg Rise (abs training)
Art.nr: 173

Length: 70 cm
Width: 91 cm
Height: 143 cm

Weight: 68 kg



Brutal Bench
Art.nr: 174

Length: 75 cm
Width: 50 cm
Height: 160 cm

Weight: 24 kg



Dip for Brutal Bench
Art.nr: 174-1

Length: 101 cm
Width: 69 cm

Weight: 7,5 kg



Leg Rise
Art.nr: 179

Length: 70 cm
Width: 91 cm
Height: 227 cm

Weight: 78 kg



Adjustable Bench
Art.nr: 190

Length: 125 cm
Width: 45 cm
Height: 43,5 cm

Weight: 25,5 kg



Level Bench
Art.nr: 191

Length: 124 cm
Width: 45 cm
Height: 43,5 cm

Weight: 24,5 kg



Adjustble Flat Bench
Art.nr: 192

Length: 122 cm
 Width: 35,5 cm
 Height: 56 cm

Weight: 16 kg



Decline Bench
Art.nr: 193

Length: 133 cm
 Width: 45 cm
 Height: 42 - 115 cm

Weight: 31.5 kg



Decline Bench Adjustable
Art.nr: 193S

Length: 133 cm
 Width: 45 cm
 Height: 42 - 115 cm

Weight: 33 kg



Decline Bench Fixed
Art.nr: 194

Length: 148 cm
 Width: 60 cm
 Height: 60 cm

Weight: 27,5 kg



Decline Bench Adjustable
Art.nr: 194R

Length: 148 cm
 Width: 60 cm
 Height: 60 cm

Weight: 27,5 kg



Weight and barbell rack

Art.nr: 895

Length: 46,5 cm

Width: 61 cm

Height: 133 cm

Weight: 15,5 kg



Inclined weight stand

Art.nr: 197

Length: 50 cm

Width: 46,5 cm

Height: 155 cm

Weight: 12 kg



Weight stand for International weights

Art.nr: 195

Length: 50 cm

Width: 46,5 cm

Height: 125 cm

Weight: 13,5 kg



Weight stand for International weights

Art.nr: 196

Length: 50 cm

Width: 46,5 cm

Height: 155 cm

Weight: 16 kg





Cable motion machines

The 200-series consists of modern equipment which is engineered to provide optimal function and designed to save space with a compact design. All of our pulleys are designed for a smooth user experience which provide less resistance and better feeling.

The band (Powerband™) we use on our pulleys, lifts with the band wheels which centralizes the band to allow a comfortable smooth run. When using our band you will have a better workout experience because our band provides an even run compared to other cable machines. All of our machines are designed to be modern and reliable with innovative details. If desired all of our machines can be ordered with weight stacks customized for the users needs.

All the machines are available with black/gray frame and black/red cushions.

Read more about each product on our website: www.gymleco.com





Row Seated
Art.nr: 210

Length: 100 cm
Width: 55 cm
Height: 227 cm



Weight: 173,5 kg
Weight Plate: 100 kg



Lateral Pulldown
Art.nr: 211

Length: 124 cm
Width: 52 cm
Height: 226 cm



Weight: 168,5 kg
Weight Plate: 100 kg



Lateral Pulldown Rehab
Art.nr: 211R

Length: 124 cm
Width: 52 cm
Height: 226 cm



Weight: 168,5 kg
Weight Plate: 100 kg



Lateral Pulldown/Seated Row Combination
Art.nr: 214

Length: 112 cm
Width: 141 - 212 cm
Height: 225 cm

Weight: 168,5kg
Weight Plate: 100 kg



Four Station
Art.nr: 215

Length: 323 cm
Width: 53 cm
Height: 225 cm

Weight N.W: 545 kg

Cable Cross: 60 kg
Row: 100 kg
Pulldown: 100 kg
Triceps: 60 kg





Four Station With Cable Cross
Art.nr: 215K

Length: 410 cm
 Width: 323 cm
 Height: 243 cm



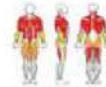
Weight N.W: 682 kg

Cable Cross: 60 kg x 2
Row: 100 kg
Pulldown: 100 kg
Triceps: 60 kg



8 Station With Cable Cross
Art.nr: 215DK

Length: 410 cm
 Width: 323 cm
 Height: 243 cm



Weight N.W: 1227 kg

Cable Cross: 60 kg x2
Row: 100 kg x2
Pulldown: 100 kg x2
Triceps: 60 kg x2



Cable Cross
Art.nr: 225

Length: 308 cm
 Width: 58 cm
 Height: 225 cm

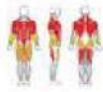
Weight: 258 kg
 Weight Plate: 60 kg x 2



Half of a Cable Cross
Art.nr: 225B

Length: 48 cm
 Width: 58 cm
 Height: 225 cm

Weight: 122 kg
 Weight Plate: 60 kg



Dual Adjustable Pulley
Art.nr: 226

Length: 151 cm
 Width: 77 cm
 Height: 228 cm

Weight: 279 kg
 Weight Plate: 60 kg x 2





Lateral Triceps Pushdown
Art.nr: 251

Length: 110 cm
 Width: 70 cm
 Height: 223 cm

Weight: 126,5 kg
 Weight Plate: 60 kg



Lateral Biceps/Triceps
Art.nr: 255

Length: 192 cm
 Width: 60 cm
 Height: 180 cm

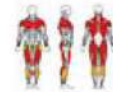
Weight: 145 kg
 Weight Plate: 60 kg



Smith Machine
Art.nr: 280

Length: 207 cm
 Width: 90 cm
 Height: 208 cm

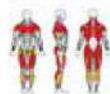
Weight: 113 kg



Smith Machine with Counterweight
Art.nr: 281

Length: 207 cm
 Width: 90 cm
 Height: 208 cm

Weight: 115 kg



Multi Smith Machine
Art.nr: 285

Length: 207 cm
 Width: 149 cm
 Height: 220 cm

Weight: 145 kg





Leg Press
Art.nr: 243

Length: 218 cm
Width: 78 cm
Height: 142 cm

Weight: 161,5 kg



Hack Squat
Art.nr: 244

Length: 195 cm
Width: 80 cm
Height: 145 cm

Weight: 137,5 kg



**Leg Press/Hack Squat
Combination**
Art.nr: 245

Length: 230 cm
Width: 81 cm
Height: 145 cm



SelectORIZED equipment

The 300-series consists of training equipment designed specifically for those who want the absolute best. All Gymleco equipment is of timeless design and each piece is engineered for reliable performance.

At Gymleco our top priority is function, for example our unique details such as the cam arm or band that transfers weight. All Gymleco equipment is easy to maintain with a few simple adjustments, that are easy to access with no disassembly. Some of our 300 series -machines have an R after the art. number, which means that the start angle is adjustable for rehabilitation uses. The 300 Series machines are constructed to the highest quality and built to withstand years of intense use. The weight stack stands are low to provide a more open and free design, and the instruction board is clearly labeled.

All the machines are available with black/gray frame and black/red cushions. **Read more about each product on our website: www.gymleco.com**



Model #364 Adductor/Abductor
with black frame



Seated Row

Art.nr: 310

Length: 120 cm
Width: 60 cm
Height: 162 cm

Weight: 227 kg
Weight Plate: 100 kg



Lats Pull

Art.nr: 311

Length: 126 cm
Width: 95 cm
Height: 186 cm

Weight: 211 kg
Weight Plate: 100 kg



Iso Lateral Low Row

Art.nr: 312

Length: 121 cm
Width: 81 cm
Height: 166 cm

Weight: 206 kg
Weight Plate: 100 kg



Power Station

Art.nr: 314

Length: 126 cm
Width: 120 cm
Height: 200 cm

Weight: 226 kg
Weight Plate: 100 kg



Incline Press With Startpedal

Art.nr: 320

Length: 156 cm
Width: 122 cm
Height: 173 cm

Weight: 218 kg
Weight Plate: 100 kg



Chest Press With Startpedal

Art.nr: 321

Length: 139 cm
Width: 137 cm
Height: 149 cm

Weight: 224 kg
Weight Plate: 100 kg



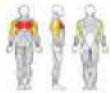


Iso Lateral Pec Deck

Art.nr: 323

Length: 146 cm
Width: 171 cm
Height: 150 cm

Weight: 198,5 kg
Weight Plate: 100 kg



Pullover

Art.nr: 324

Length: 143 cm
Width: 89 cm
Height: 172 cm

Weight: 190 kg
Weight Plate: 100 kg



Shoulder Press

Art.nr: 330

Length: 155 cm
Width: 125 cm
Height: 165 cm

Weight: 234 kg
Weight Plate: 100 kg



Iso Lateral Shoulder Rotation

Art.nr: 331

Length: 87 cm
Width: 75 cm
Height: 135 cm

Weight: 168 kg
Weight Plate: 80 kg



Rear Deltoid Shoulder

Art.nr: 333

Length: 147 cm
Width: 70 - 174 cm
Height: 149 cm

Weight: 224 kg
Weight Plate: 100 kg



Pec Deck Combination

Art.nr: 335

Length: 147 cm
Width: 70 - 174 cm
Height: 149 cm

Weight: 224 kg
Weight Plate: 100 kg

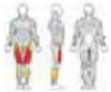




Leg Extension
Art.nr: 340

Length: 95 cm
Width: 99 cm
Height: 162 cm

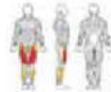
Weight: 202 kg
Weight Plate: 100 kg



Leg Extension Rehab
Art.nr: 340R

Length: 95 cm
Width: 99 cm
Height: 162 cm

Weight: 213 kg
Weight Plate: 100 kg



Leg Curl Seated
Art.nr: 341

Length: 100 cm
Width: 136 cm
Height: 148 cm

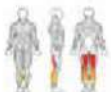
Weight: 163,5 kg
Weight Plate: 80 kg



Lying Leg Curl
Art.nr: 342

Length: 170 cm
Width: 97 cm
Height: 149 cm

Weight: 173,5 kg
Weight Plate: 80 kg



Lying Leg Curl Rehab
Art.nr: 342R

Length: 170 cm
Width: 97 cm
Height: 149 cm

Weight: 182,5 kg
Weight Plate: 80 kg



Leg Press Adjustable
Art.nr: 343

Length: 221 cm
Width: 116 cm
Height: 162 cm

Weight: 316 kg
Weight Plate: 150 kg





Seated Calf Raises
Art.nr: 345

Length: 120 cm
Width: 60 cm
Height: 140 cm

Weight: 203 kg
Weight Plate: 120 kg



Calf Raise Standing
Art.nr: 347

Length: 130 cm
Width: 60 cm
Height: 180 cm

Weight: 247 kg
Weight Plate: 150 kg



Calf Raise 45°
Art.nr: 348

Length: 150 cm
Width: 86 cm
Height: 146 cm

Weight: 255 kg
Weight Plate: 150 kg



Leg Extension/Leg Curl
Art.nr: 349

Length: 115 cm
Width: 99 cm
Height: 163 cm

Weight: 224 kg
Weight Plate: 100 kg



Biceps Machine
Art.nr: 350

Length: 100 cm
Width: 95 cm
Height: 153 cm

Weight: 153 kg
Weight Plate: 60 kg



Triceps Machine
Art.nr: 351

Length: 130 cm
Width: 60 cm
Height: 140 cm

Weight: 182 kg
Weight Plate: 100 kg





**Dips Machine with
Shoulder Pull**

Art.nr: 354

Length: 174 cm
Width: 85 cm
Height: 136 cm

Weight: 235 kg
Weight Plate: 100 kg



Biceps/Triceps Combination

Art.nr: 355

Length: 129 cm
Width: 84 cm
Height: 149 cm

Weight: 170 kg
Weight Plate: 60 kg



Forearm Machine

Art.nr: 356

Length: 61 cm
Width: 75 cm
Height: 136 cm

Weight: 147,5 kg
Weight Plate: 80 kg



Forearm Curl

Art.nr: 357

Length: 93 cm
Width: 78 cm
Height: 103 cm

Weight: 152 kg
Weight Plate: 80 kg



Gluteus Machine

Art.nr: 360

Length: 86 cm
Width: 75 cm
Height: 136 cm

Weight: 187 kg
Weight Plate: 100 kg



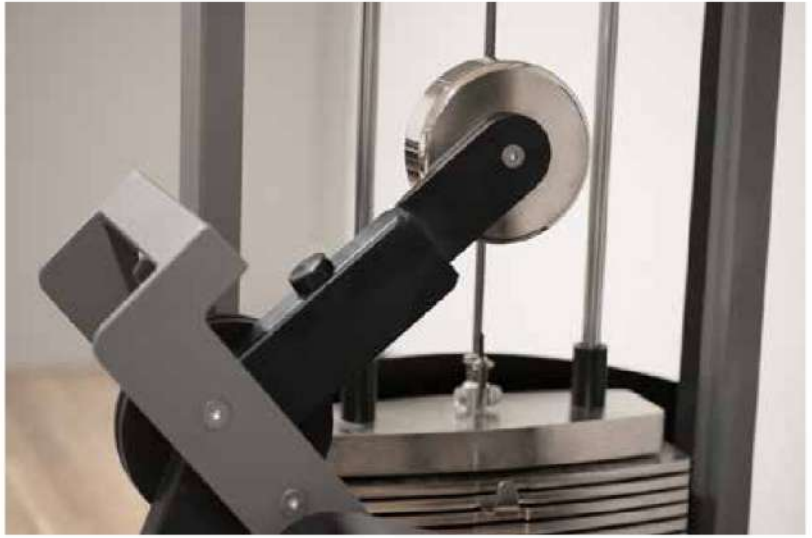
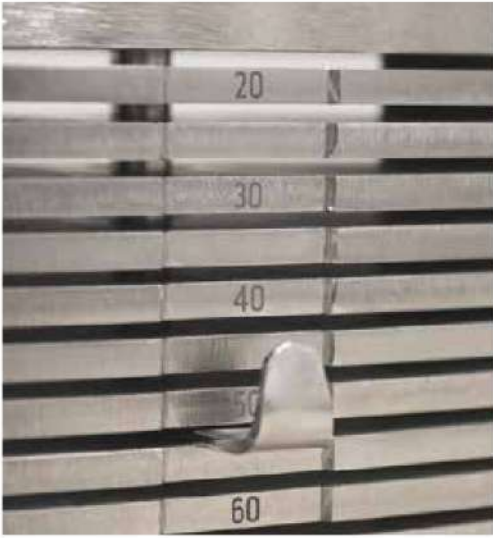
Adductor/Abductor

Art.nr: 364

Length: 130 cm
Width: 86 cm
Height: 137 cm

Weight: 192 kg
Weight Plate: 80 kg







**Lumbar/Abdominal
Combination**

Art.nr: 365A

Length: 100 cm
Width: 90 cm
Height: 160 cm

Weight: 225 kg
Weight Plate: 100 kg



**Lumbar/Abdominal
Combination**

Art.nr: 365B

Length: 100 cm
Width: 90 cm
Height: 160 cm

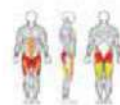
Weight: 230 kg
Weight Plate: 100 kg



**Multihip
Art.nr: 369**

Length: 115 cm
Width: 110 cm
Height: 160 cm

Weight: 177 kg
Weight Plate: 60 kg



Abdominal Seated

Art.nr: 370

Length: 170 cm
Width: 101 cm
Height: 104 cm

Weight: 176 kg
Weight Plate: 60 kg



Waist Trainer

Art.nr: 375

Length: 120 cm
Width: 75 cm
Height: 139 cm

Weight: 155 kg
Weight Plate: 60 kg



Waist Trainer on knees

Art.nr: 376

Length: 95 cm
Width: 65 cm
Height: 125 cm

Weight: 146,5 kg
Weight Plate: 60 kg





Crossfit, strongman street workout

Gymleco has also equipment for other than just traditional fitness and strength equipment. Trends that have emerged in recent years are Crossfit, Street Workout and Strongman.

Strongman is a discipline in strength sports that focuses on functional strength. Instead of standard bumper plates and barbells, they use among other things, cars, and tires as equipment. Street Workout is a combination between gymnastics and parkour where body weight is used. Gymleco has for several years chosen to sponsor the various competitions in this area of training. All of the equipment is specifically designed and unique for the sport.

Read more about our products on our website: www.gymleco.com





CARDIO

Gymleco

LN8 Gymleco Smart Treadmill, Touch screen

Cardio Machines



The LN8 treadmill is a new, innovative cardio machine with a smart touch screen in HD. The treadmill is large, commercial and provides a wonderful training experience.

With all the treadmill's functions in the touch screen, you can choose, among other things, which environment you want to run in. For example, you can choose to run in a natural and beach environment, where the screen shows video and automatically selects speed, up / downhill, music and more.

The treadmill is comfortable and gentle at the same time as extremely robust and stable. Durable cardio machine that is excellent for the commercial gym.

- Motor: 4,0 Hp
- Speed: 25-1km / h
- Incline: 0-20%
- Running surface: 160 x 57 mm
- User friendly control display
- 21.5 HD Display screen with wifi
- Outdoors simulator
- User data management
- Bluetooth
- Cooling fan

Length	Width	Height	Weight	Max User Weight
216 cm	90 cm	160 cm	202 kg	240 kg

Clean inside and outside to avoid dust and dirt. Control that the band wheel runs smoothly, should not come in contact with the silicon spray.

Lubricate the mat regularly with silicon spray. Clean with gentle detergent.

LTX200 Gymleco Commercial Treadmill, with self-lubrication

Cardio Machines



A powerful Gymleco treadmill for commercial use. Safe, stable and reliable which allows heavy usage. Self-lubricating deck and running platform makes the maintenance easy. The treadmill has a unique impact absorbing system and is one of the better machines on the market when it comes to the feeling and response when you run.

A power machine for a good price. The treadmill also has an aluminium frame which keeps it looking good, year after year.

The difference between the treadmills LTX200 and LTX150 is the machine size, speed and incline, read more in LTX150's product sheet .

- Running surface: 162 x 58 cm
- Quiet fan that gives a cool breeze
- Self-lubricating tape
- Roll / roller diameter: 100 mm
- USB (MP3)
- Engine 5.3 HP
- Speed: 25-1 km / h
- Incline: 0-18%
- Speed dial for speed and incline
- Unlimited user weight

Length	Width	Height	Weight	Max User Weight
220 cm	100 cm	148 cm	180 kg	200 kg

Clean inside and outside to avoid dust and dirt. Control that the band wheel runs smoothly, should not come in contact with the silicon spray.

Lubricate the mat regularly with silicon spray. Clean with gentle detergent.

LN9 Gymleco Smart Treadmill, Touch Screen

Cardio Machines



The treadmill is designed with a modern 19.5 inch display with touch screen and wifi. The control

This treadmill called LN9 is an extraordinary cardio machine. It is neat and compact but still stable and robust. The treadmill is extremely comfortable to run in and gives the feeling of flying forward. You as a gym owner can be comfortable in having found a treadmill that holds the measure for daily use. The LN9 Treadmill is easy to use and understand. Therefore, this treadmill is suitable for everyone regardless of the experience in training.

The treadmill is designed with a modern 19.5 inch display with touch screen and wifi. The control display has a very simple and clear menu system where you can, among other things, choose which environment you want to walk and run in, in addition, the speed is adjusted according to the environment in the screen when selecting that program. This treadmill is designed to be perfectly suitable for commercial use and is therefore a good choice for all kinds of gyms: commercial gyms, company gyms, gym at the spa or at a hotel.

- Running surface: 160 x 58 cm
- User friendly control display
- 19.5 Inch Touch screen (Android) with wifi
- Motor AC 2.2KW 6.0 HP (PEAK)
- Quite fan that gives a nice breeze
- Compact but airy design
- Incline 0-18%
- Speed 20-1km

Length 202,5 cm	Width 87 cm	Height 150 cm	Weight 185 kg	Max User Weight 180 kg
--------------------	----------------	------------------	------------------	---------------------------

Clean inside and outside to avoid dust and dirt. Control that the band wheel runs smoothly, should not come in contact with the silicon spray.

Lubricate the mat regularly with silicon spray. Clean with gentle detergent.

LTX150 Gymleco Commercial Treadmill, with self lubrication

Cardio Machine



Let us present a commercial Gymleco treadmill for professional use. Safe, robust and reliable which can handle a lot of usage at large gyms and other training facilities. Self-lubricating system which makes the maintenance simple and the treadmill keeps in expected condition.

The treadmill has a unique shock absorbing system and is one of the better treadmills on the market when it comes to the feeling when you run. The treadmill has a user friendly menu system and is therefore easy to use for everyone. The difference between LTX150 and LTX200 is the machine size, speed and incline. Read more about LTX200 in the product sheet.

- Running area: L: 160 cm B: 58 cm
- Motor: Max 5,8 hk with a powerful gear switcher
- Speed 20-1 km / h
- Incline %16-0
- One-touch incline and speed change
- Self-lubricating system
- Self motored band wheel
- 7'LED Display
- Band fastener
- USB-outlet
- Special shock absorption system

Length	Width	Height	Weight	Max User Weight
220 cm	92 cm	148 cm	200 kg	150 kg

Clean inside and outside to avoid dust and dirt. Control that the band wheel runs smoothly, should not come in contact with the silicon spray.

Lubricate the mat regularly with silicon spray. Clean with gentle detergent.

LAR22 Alpha Runner, Commercial Treadmill

Cardio Machines



Alpha Runner treadmill is an extremely effective and comfortable treadmill to exercise your cardio in. The straight model of the treadmill makes your running gentle and comfortable.

The combination of the new technology, more precise multi-touch interfaces and a powerful AC motor drive system provides high efficiency and entertainment in your training routine.

In the Alpha Runner treadmill, you have the opportunity to run at speeds up to 25km / h and on a incline of up to 20%. The display is in a classic design and thus easy to understand for all trainees. The treadmill is excellent for the commercial gym.

- Running surface: 147 x 56 cm (lamella band)
- Time, Distance, Speed, Program
- LED DOT-MATRIX Display
- 25-1 km/h Speed
- Display shows: Level, Calories,
- AC Motor
- Polar compatible
- USB charger

Length	Width	Height	Weight	Max User Weight
197 cm	91 cm	164 cm	220 kg	180 kg

Lubricate the mat regularly with silicon spray. Control that the band wheel runs smoothly, should not come in contact with the silicon spray.

Clean inside and outside to avoid dust and dirt. Clean with gentle detergent.

LHR500 Gymleco Commercial Treadmill, Motorless

Cardio Machines



Our treadmill LHR500 is a concept where the treadmill is operated without a motor. It means that it starts through gravity and accelerates in a controlled manner after the running steps. On the treadmill, there is a battery-powered (4 x AA Alkali batteries) display where time, speed, calories and distance are displayed.

The treadmill is gentle on the knees and is therefore excellent for rehabilitation training. The treadmill is also an economical alternative where electricity costs cease completely.

The shock-absorbing lamella technology means that the belt wears much more slowly than a traditional belt, which leads to low service costs and a longer use. The treadmill is ultimate for functional training and is usually found in boxes but also commercial gyms.

- Running surface 155 x 43,6 cm
- Simple control display with Time, Distance, Speed and Calories
- Display powered by 4 AA Alkali Batteries
- Completely motorless, no electricity needed
- The user controls the speed
- Compact but airy design

Length	Width	Height	Weight	Max User Weight
175 cm	79 cm	160 cm	165 kg	180 kg

Clean inside and outside to avoid dust and dirt. Control that the band wheel runs smoothly, should not come in contact with the silicon spray.

Lubricate the mat regularly with silicon spray. Clean with gentle detergent.

LS1- Gymleco Indoor Bike

Cardio Machines



Are you looking for an exercise bike which is usefully compact but still made of the highest quality and very comfortable? This exercise bike from Gymleco is an excellent piece of training equipment which is comfortable, silent and also good looking.

The pedals are stable and have a fastening belt to fasten your feet. The seat is comfortable to sit on and the movement when you pedal is smooth. Gymleco's exercise bike has 8 different magnetic resistance levels which you can easily select. The handles are designed so that you can keep your hands in multiple positions and in different heights.

Gymleco's exercise bike is excellent to place in commercial gyms and other training facilities where the need for robust and high quality cardio machines are needed.

- PK belt drive
- Flywheel weight 18 kg (450mm)
- 8 step magnetic resistance adjust
- Fully adjustable handrail and seat
- Bluetooth display & SPD combi pedals
- Color: Black with red details
- Adjustable pedal resistance in 1-8 levels

Length 149 cm	Width 64,5 cm	Height 127 cm	Weight 63 kg	Max User Weight 110 kg
-------------------------	-------------------------	-------------------------	------------------------	----------------------------------

L7025 Gymleco Exercise Bike, Commercial

Cardio Machines



This exercise bike is ergonomically designed and suitable for all training and gym environments. The exercise bike is designed with wheels which makes it easy to move around and handles with different grip options. Thanks to the classic and beautiful design, it is easy to place in any gym and at the same time easy to understand for everyone, regardless of being a beginner or an advanced athlete. The easy-to-read display shows time, distance, speed, speed level, calorie burn, heart rate and power.

The exercise bike is extremely stable and silent. The display and brake system is self-sufficient which means that you don't need any cables. It's high quality on all details with protective covers which are durable and silent.

- Heart rate monitor in the handles
- Handles with different grip options
- The bike has sturdy adjustable feet
- The wheels make it easy to move
- LED console
- Cordless generator operation

Length	Width	Height	Weight	Max User Weight
166 cm	32,5 cm	78 cm	68 kg	180 kg

L7230 Gymleco Recumbent Bike, Commercial

Cardio Machines



This recumbent exercise bike offers a variety of functional features to contribute to a comfortable and gentle training experience. This training cycle is very stable and quiet.

The exercise bike is designed in high quality plastic parts, to be both stable and silent. The ergonomic backrest makes the exercise bike comfortable and easily set at the right angle from a sitting position. The distance between pedals and seat is set easily to fit all body lengths, whether shorter or longer

Display showing time, distance, speed, level, calorie burn, heart rate and power.
You select one of the 18 programs

- With the wheels you move it easily to the desired position.
- The handles have a heart rate monitor and easy adjustment of the resistance

Length	Width	Height	Weight	Max User Weight
180 cm	71 cm	133 cm	80 kg	180 kg

LE22 Gymleco Stair machine, Commercial

Cardio Machines



The new innovation is here to stay. The stair machine is the new generation of cardio machines. It is designed to give you completely new training experiences and has a high-tech system with AC motor and transducer.

Vary and maximize your cardio training with stair climbing, we can guarantee a challenge for your strength training.

The stair machine has become a big part of many people's training sessions, especially on the leg sessions. Therefore, the stair machine is a given choice in the gym and is available in most commercial training facilities today. Simple and flexible screen with functions for everyone to understand.

- Door opening with a width of 100 cm is required
- Ceiling height 270 cm is required for a person who is 195 cm tall
- Step area: 53 x 24.6 x 190 cm
- Starting height: 26cm, Step height: 19cm
- LED DOT-MATRIX Display: Level, Calories, Time, Distance, Speed, 14 programs

Length 156 cm	Width 100 cm	Height 214 cm	Weight 220 kg	Max User Weight 180 kg
-------------------------	------------------------	-------------------------	-------------------------	----------------------------------

L7505 Gymleco Crosstrainer, Commercial Elliptical

Cardio Machines



This commercial crosstrainer is a stable and quiet cardio machine with good functionality. It is generator driven which means that it does not need any power. Large grip-friendly footplates make the training harmonious and safe.

The crosstrainer has sturdy and stable pedals and handles as well as very stable joints with large ball bearings. The construction of the machine makes it suitable for environments with relatively low ceiling height.

The cardio machine fits well in both the commercial gym but in company gyms, club gyms and other training rooms where sustainable cardio machines are needed.

- Led Display
- Cordless generator operation
- The display shows time, distance, speed, speed, level, calorie consumption, heart rate and power.
- The machine has 18 different programs, of which 1 is manual, 4 heart rate controlled and 1 personal set for the user.
- The step length is 58 cm

Length	Width	Height	Weight	Max User Weight
238 cm	68 cm	160 cm	112 kg	180 kg

L7505 Gymleco Crosstrainer, Commercial Elliptical

Cardio Machines



This commercial crosstrainer is a stable and quiet cardio machine with good functionality. It is generator driven which means that it does not need any power. Large grip-friendly footplates make the training harmonious and safe.

The crosstrainer has sturdy and stable pedals and handles as well as very stable joints with large ball bearings. The construction of the machine makes it suitable for environments with relatively low ceiling height.

The cardio machine fits well in both the commercial gym but in company gyms, club gyms and other training rooms where sustainable cardio machines are needed.

- Led Display
- Cordless generator operation
- The display shows time, distance, speed, speed, level, calorie consumption, heart rate and power.
- The machine has 18 different programs, of which 1 is manual, 4 heart rate controlled and 1 personal set for the user.
- The step length is 58 cm

Length	Width	Height	Weight	Max User Weight
238 cm	68 cm	160 cm	112 kg	180 kg

L7505 Gymleco Crosstrainer, Commercial Elliptical

Cardio Machines



This commercial crosstrainer is a stable and quiet cardio machine with good functionality. It is generator driven which means that it does not need any power. Large grip-friendly footplates make the training harmonious and safe.

The crosstrainer has sturdy and stable pedals and handles as well as very stable joints with large ball bearings. The construction of the machine makes it suitable for environments with relatively low ceiling height.

The cardio machine fits well in both the commercial gym but in company gyms, club gyms and other training rooms where sustainable cardio machines are needed.

- Led Display
- Cordless generator operation
- The display shows time, distance, speed, speed, level, calorie consumption, heart rate and power.
- The machine has 18 different programs, of which 1 is manual, 4 heart rate controlled and 1 personal set for the user.
- The step length is 58 cm

Length	Width	Height	Weight	Max User Weight
238 cm	68 cm	160 cm	112 kg	180 kg

L1000 Gymleco Airbike

Cardio Machines



Gymleco's Airbike has become an incredibly popular product in, among other things, functional training, which has now also come to the commercial gyms. The Airbike provides an incredibly tough and high-intensity cardio training, which is appreciated in functional fitness.

The bike is easy to use and runs on fan resistance, which means that the faster you pedal the higher the resistance. The bike is thus motorless and you avoid extra electricity costs and electrical cables.

Gymleco's Airbike has unique features such as the strong frame and longevity of the bike. After years of feedback, we can proudly say that our Airbike is among the best on the market. Despite that, we also keep it price friendly.

- Heart rate monitor in the handles
- Real handles with different grip options
- The bike has sturdy adjustable feet
- The wheels make it easy to move
- LED console
- Cordless generator operation

Length	Width	Height	Weight	Max User Weight
127 cm	88 cm	27 cm	57 kg	120 kg



ACCESSORIES

Gymleco





Bumpers and barbell rack

Art.nr: 895

Length: 46,5 cm

Width: 61 cm

Height: 133 cm

Weight: 15,5 kg



Inclined weight stand

Art.nr: 197

Length: 50 cm

Width: 46,5 cm

Height: 155 cm

Weight: 12 kg



Weight stand with 6 holders

Art.nr: 196

Length: 50 cm

Width: 46,5 cm

Height: 155 cm

Weight: 16 kg



Weight stand with 8 holders

Art.nr: 195

Length: 50 cm

Width: 46,5 cm

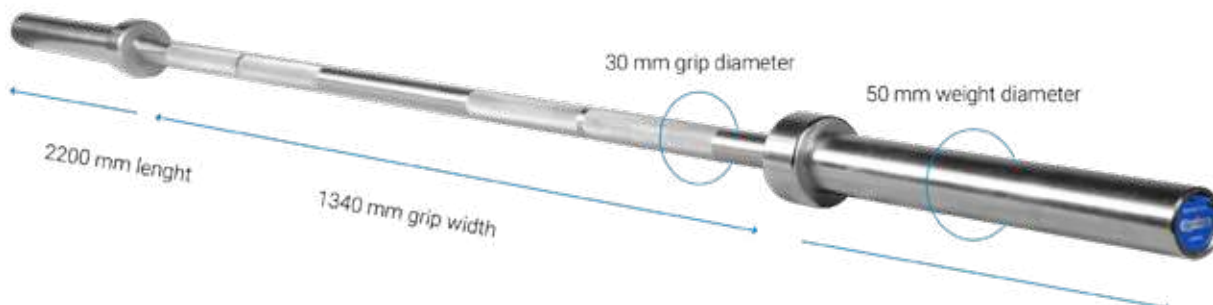
Height: 125 cm

Weight: 13,5 kg



Gymleco International Bar, 320+ kg / 20 kg

Art.nr: 410



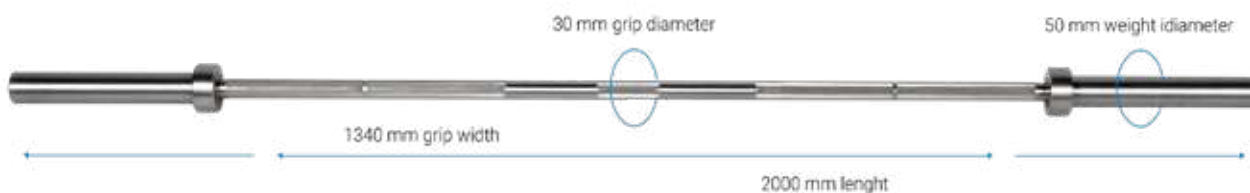
Gymleco Powerlifting Bar Black, 680+ kg / 20 kg

Art.nr: 411



Gymleco Compact Bar, 320+ kg / 17,5 kg

Art.nr: 412



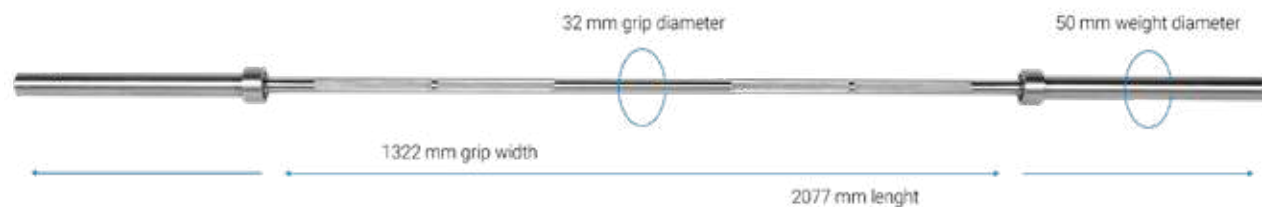
Gymleco International Triceps Bar, Double Grip / 12 kg

Art.nr: 413

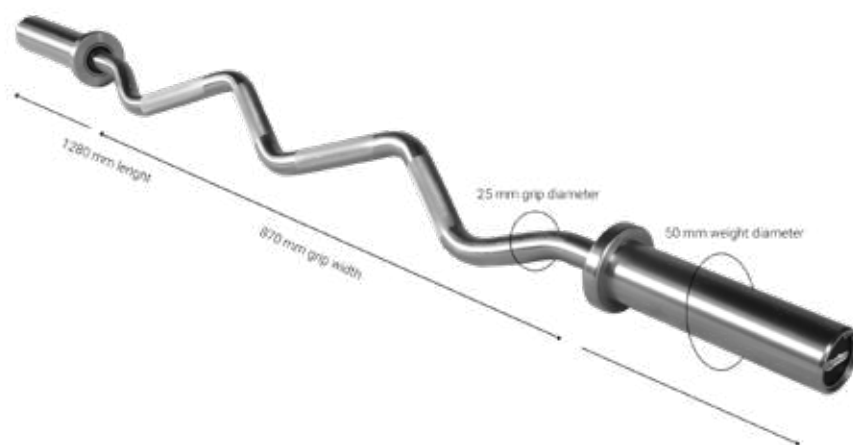


Gymleco Powerlifting Bar, 680+ kg / 20 kg

Art.nr: 414



Gymleco International Curl Bar, 320+ kg / 8,5 kg
Art.nr: 415



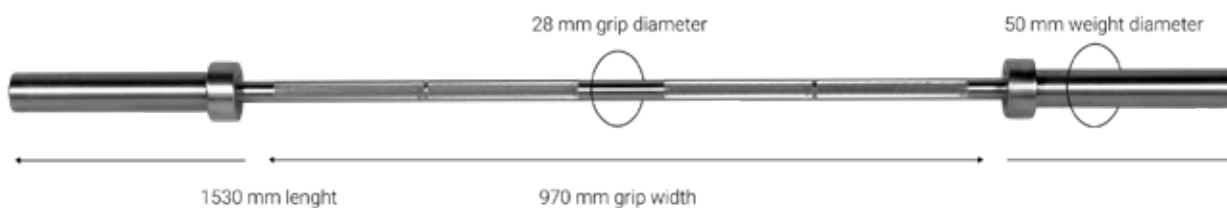
Gymleco International Curl Bar, S-Shape, 320+ kg / 8,5 kg
Art.nr: 415S



Gymleco Supra Curl Bar, Biceps & Triceps / 10,4 kg
Art.nr: 415Q



Gymleco International Lady Bar
Art.nr: 416



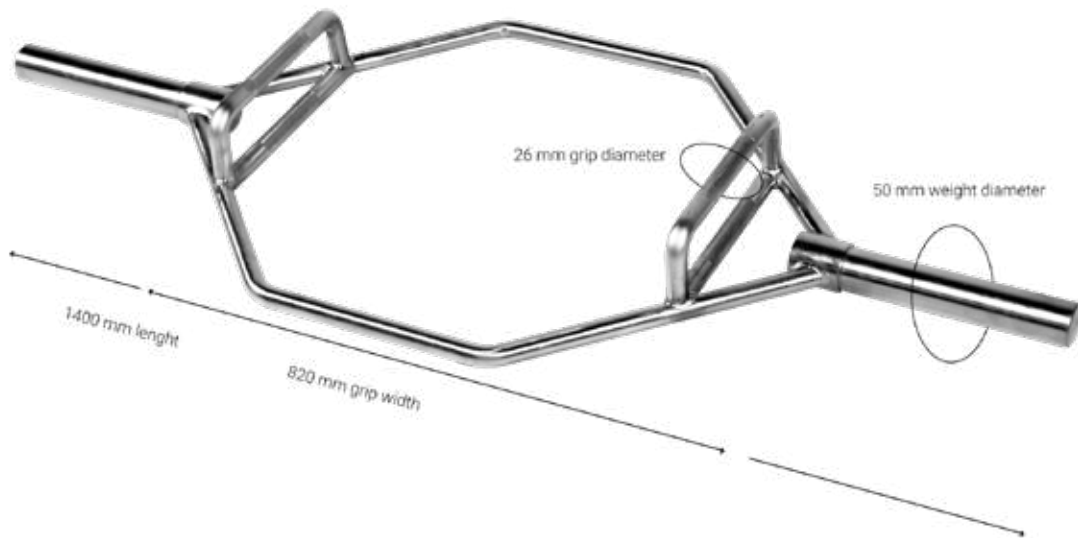
Gymleco Compact Workout Bar 170 cm, 230+ kg

Art.nr: 417



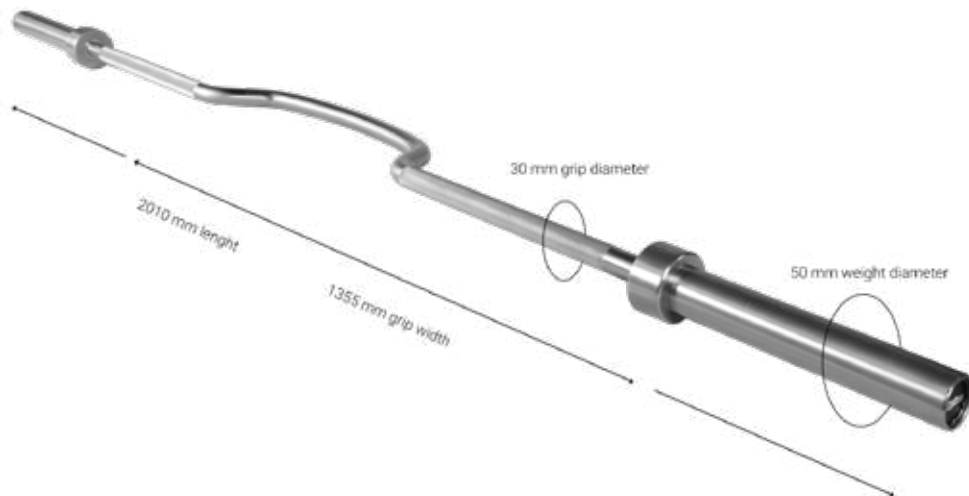
Gymleco Hex Bar, 250+ kg / 22,5 kg

Art.nr: 418



Gymleco International Curved Bar, 680+ kg / 20 kg

Art.nr: 419



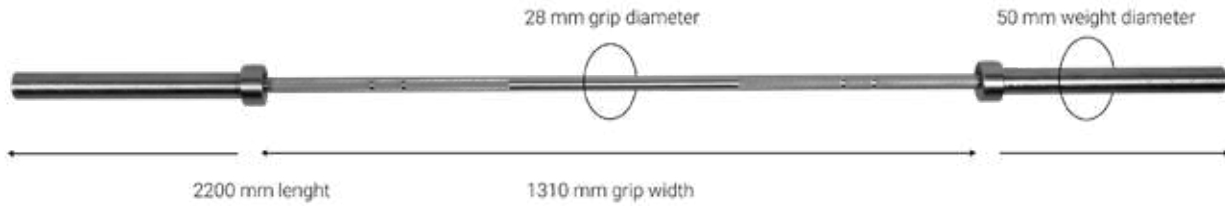
Gymleco Cross Hybrid Bar, Double Grip marking / 20 kg

Art.nr: 808



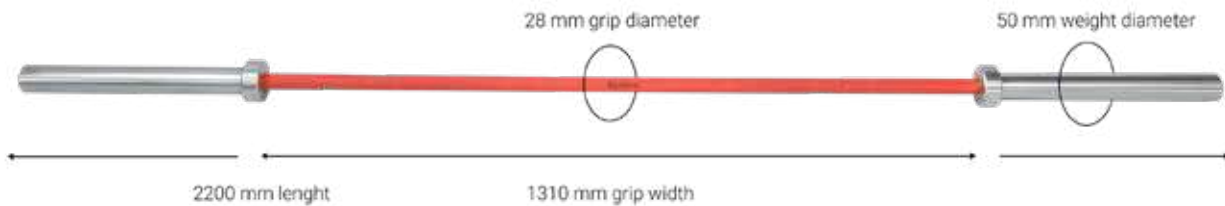
Gymleco Cross Bar, 800+ kg / 20 kg

Art.nr: 810



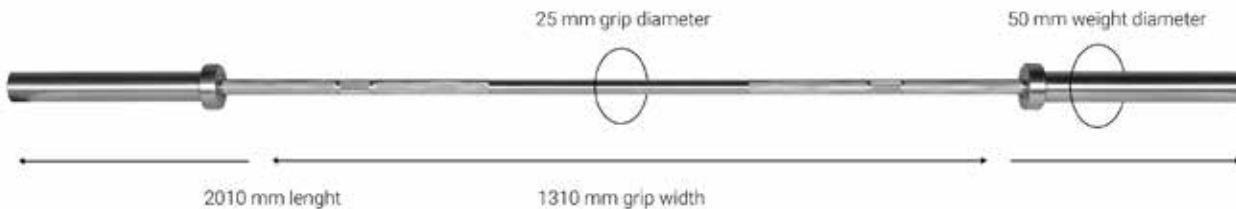
Gymleco Ceracote Cross Bar, 800+ kg / 20 kg

Art.nr: 810CR



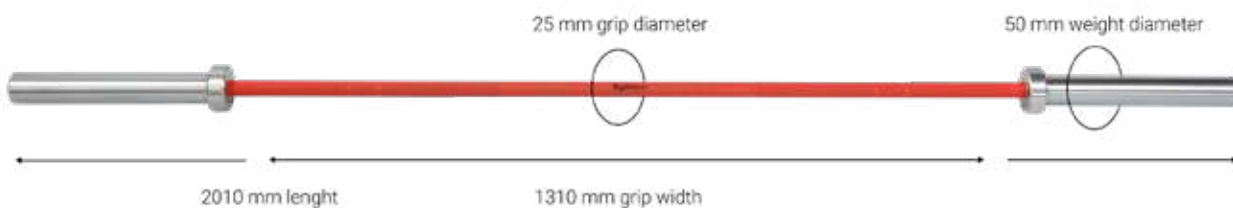
Gymleco Cross Bar Women, 600+ kg / 15 kg

Art.nr: 812



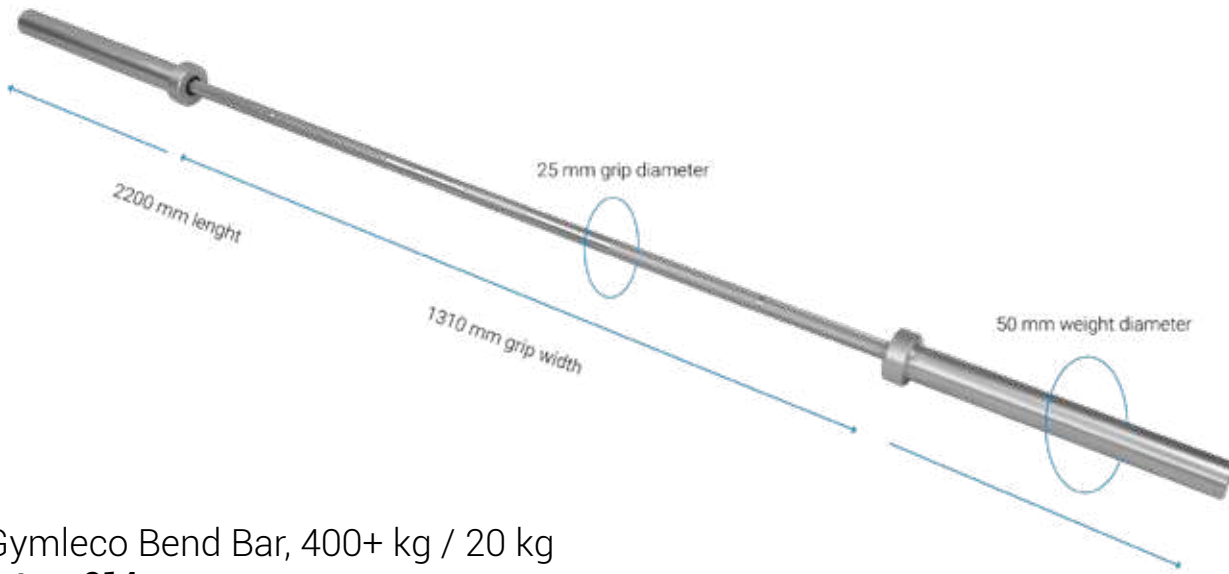
Gymleco Ceracote Cross Bar Women, 600+ kg / 15 kg

Art.nr: 812CR



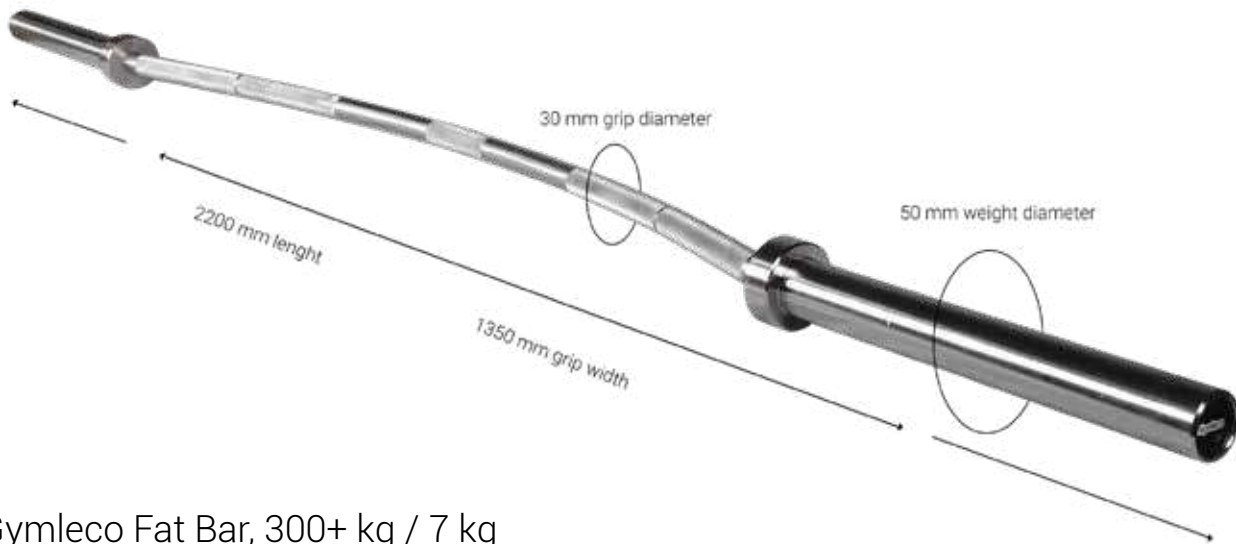
Gymleco Technique Bar, 40+ kg / 10 kg

Art.nr: 813



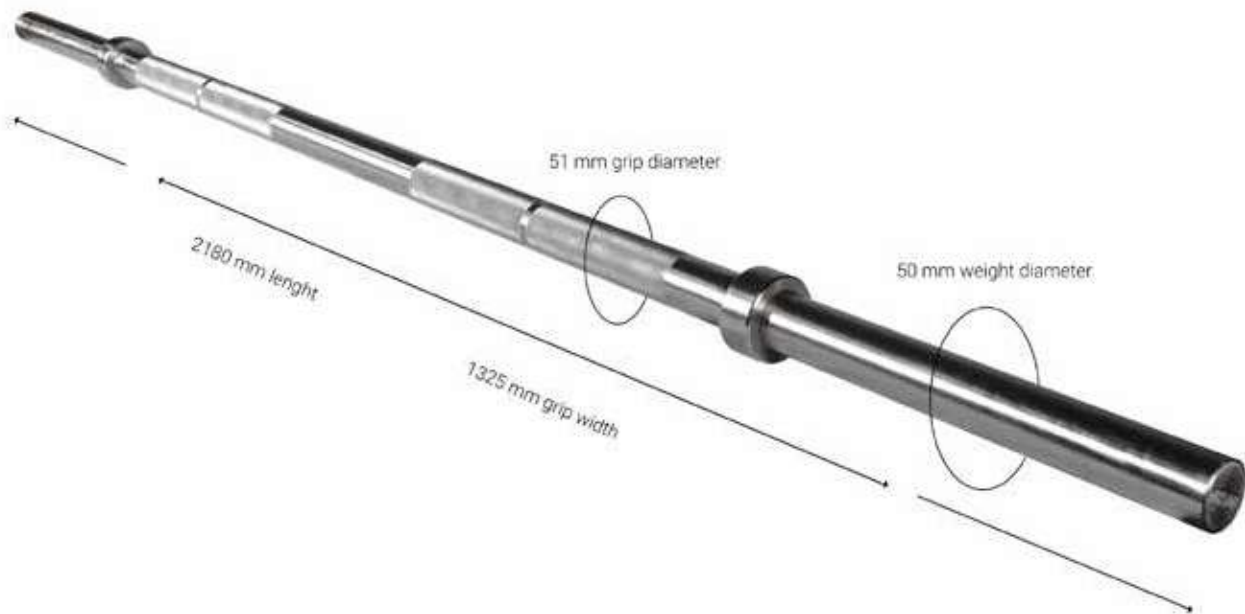
Gymleco Bend Bar, 400+ kg / 20 kg

Art.nr: 814

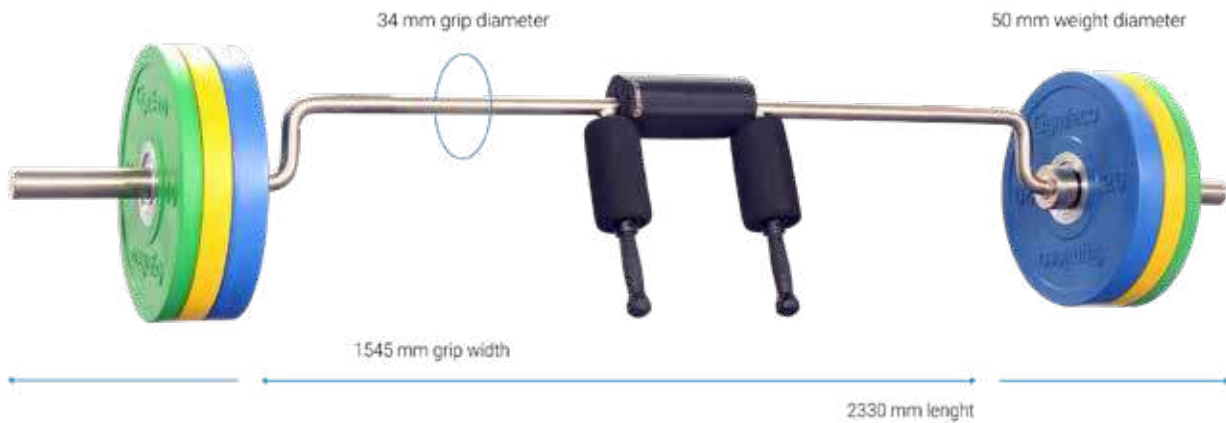


Gymleco Fat Bar, 300+ kg / 7 kg

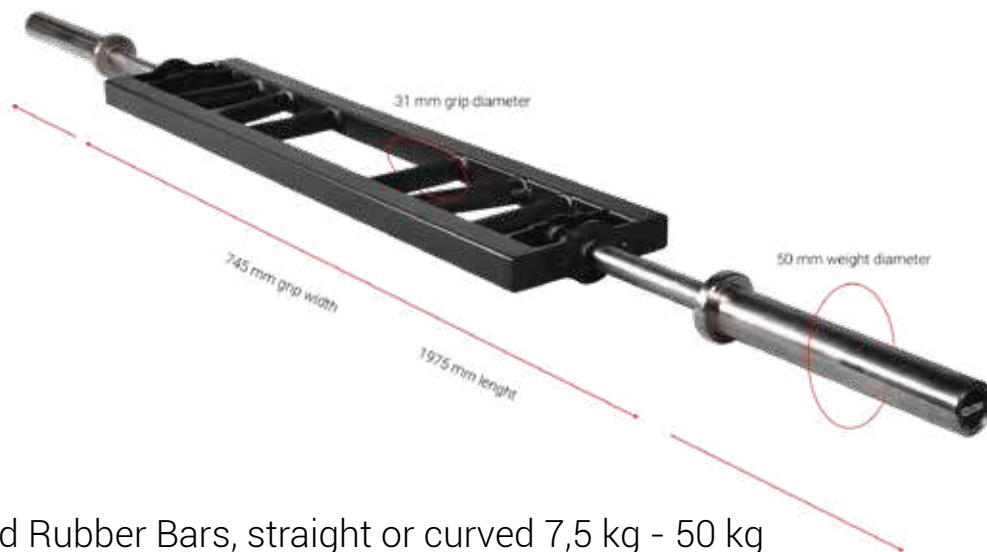
Art.nr: 817



Gymleco Safety Squat Bar, 400+ kg / 30 kg
Art.nr: 818



Gymleco Multi Grip Bar, 400+ kg / 20 kg
Art.nr: 819



Gymleco Solid Rubber Bars, straight or curved 7,5 kg - 50 kg
Art.nr: 825





Gymleco Weight Plates with handles

Art.nr: 423

Gymleco's weight plates are made of high quality rubber and have a good design suited for any commercial gym. These weight lifting plates have handles for easy change of weights when working out.

Hole diameter 50 mm

Available in sizes: 1,25kg, 2,5kg, 5kg, 10kg, 15kg, 20kg and 25kg



Gymleco Weight Plates with handles

Art.nr: 422

Gymleco's weight plates are made of high quality rubber and have a good design suited for any commercial gym. These weight lifting plates have handles for easy change of weights when working out.

Hole diameter 50mm

Available in sizes: 1,25kg, 2,5kg, 5kg, 10kg, 15kg, 20kg and 25kg



Gymleco Bumper Plates, Black

Art.nr: 824B

Gymleco bumperplates are designed and made of the highest commercial quality, with a diameter of 450 mm and a strong reinforced steel center in the middle. Perfectly suitable for the gymcenter, functional fitness box or the commercial homegym.

Hole diameter 50mm

Available in 5kg, 10kg, 15kg, 20kg, 25kg



Gymleco Bumper Plates, Colored

Art.nr: 824C

Gymleco bumperplates are made of the highest commercial quality, with a diameter of 450 mm and a strong reinforced steel center in the middle. Perfectly suitable for the gymcenter, functional fitness box or the commercial homegym.

Hole diameter 50mm

Available in 5kg, 10kg, 15kg, 20kg, 25kg



Gymleco Fractional Urethane Plates

Art.nr: 824F

These bumper weights are excellent for small weight changes in your workout and color coded for easy identification. Premium urethane provides unmatched durability and will not damage the bar.

Hole diameter 50mm

Available in sizes:
0,5kg, 1kg, 1,5kg, 2kg, 2,5kg and 5kg



Gymleco Technique Weight Plates

Art.nr: 824T

Gymleco's weight plates are made of high quality rubber and have a good design suited for any commercial gym. These weight lifting plates are suited for serious weightlifting and have handles for easy change of weights when working out.

Hole diameter 50mm

Available in sizes: 2,5 kg and 5kg



Gymleco Competition Kettlebells **Art.nr: KETC**

Kettlebells with one hand grip. Durable dumbbells made of cast iron with comfortable grip. Stylish and high quality kettlebells. Available in several sizes. Color marking on each kettlebell. Measure of the kettlebell does not change even if the weight does. Sizes in 28 ,24 ,20 ,16 ,12, 32 kg.



Gymleco Iron Kettlebells **Art.nr: KET**

We introduce qualitative kettlebells in iron material, with color markings. Weights and grip diameters based on the original dimensions. Double handles of all sizes. Weight marking in both KG and LB. Sizes from 4 kg-56 kg.



Weight Plates for Dumbbells **Art.nr: 832**

Black polyurethane rubber weight plates for buildable dumbbells and body pump. Hole diameter 30 mm. (Fits to handle: R220)



Gymleco Rubber Disc Dumbbells **Art.nr: 832**

Polyurethane disc dumbbells from Gymleco. A new updated and improved model. Weights with clear weight labelling and made of polyurethane rubber. Available in all sizes from 5 ,7 kg to 100 kg.



Gymleco Iron Disc Dumbbells **Art.nr: 834**

Get the most out of your fitness workouts with Gymleco's iron dumbbells. Dumbbells in highest quality. Available in all sizes from 7,5 kg to 80 kg.



Gymleco Rubber Dumbbells 10-1 kg
Art.nr: 835

Gymleco's rubberized dumbbells are manufactured with durable rubber. Each weight comes with clear markings and comfortable handles. Available in sizes 10-1 kg.



Gymleco Hex Dumbbells 10-1 kg
Art.nr: 433

These rubber hex dumbbells deliver the perfect balance of quality and price to any athlete. These dumbbells are available in weight ranging from 10-1 kg.



Gymleco Chrome Dumbbells 10-1 kg
Art.nr: 430

These highly reflective and attractive dumbbells add a touch of class to any gym. These chrome dumbbells are ergonomically contoured to fit comfortably in the users hand.



Gymleco PU Rubber Dumbbells
Art.nr: 836

These dumbbells are made of the highest commercial quality, delivering a durable dumbbell with a well-thought-out design. All weights come with clear markings and no risk of weights becoming loose.



Gymleco Steel Dumbbells
Art.nr: 838

Gymleco's new, unique steel dumbbells. Really robust weights that can stand hard weight training. No loose detail or surface treatment that can loosen or flatten. That makes the dumbbells extremely durable.

R101



R102



R103



R106



R107



R108



R108R



R115



R112



R112L



R845



R117



R118



R120



RJ406



R122



R122R



R123



R220



R403



R406



R402



R404



R405



Training Rope



Climbing Rope



Premium Power Rope



Premium Power Rope



Resistance Bands



Strength Bands



Hygienic Mat



816 - Core Trainer



Speed Jump Rope Pro



Speed Jump Rope



Wooden Gymnastic Rings



ABS Gymnastic Rings



OSO Barbell Collar



Supra Curl Handles



R847N



R847



AB Sling



Dip Belt



Belt Squat Belt



R110 Barbell Pad



R141L

Ankle straps, leather or nylon





Foam Plyo Box
Art.nr: N60-59995

Length: 76 cm
Width: 61 cm
Height: 51 cm



Wooden Plyo Box Light
Art.nr: N59993

Length: 76 cm
Width: 61 cm
Height: 51 cm



Wooden Plyo Box Dark
Art.nr: N59993

Length: 76 cm
Width: 61 cm
Height: 51 cm



Slam Balls

Art.nr: 788

Available in sizes from 2 kg- 80 kg

Brand: Gymleco

Color: Black



Wall Balls

Art.nr: 789

Available in sizes from 2 kg 14- kg

Brand: Gymleco

Color: Black



Gymnastic Balls

Art.nr: A-D55, A-D65, A-D75

Available in sizes 55 cm, 65 cm and 75 cm

Brand: Gymleco

Color: Black



Gym Balance Trainer Ball

Art.nr: N85

Brand: Gymleco

Color: Black

Included: Pump and handles



Dumbbell Rack 10 pairs
Art.nr: 441

Length: 32,5 cm
Width: 32 cm
Height: 126 cm

Weight: 15,5 kg



Rack for 10 Barbells
Art.nr: 451V

Length: 80 cm
Width: 77 cm
Height: 15 cm

Weight: 24,5 kg



Rack for 5 Barbells
Art.nr: 452V

Length: 63 cm
Width: 71 cm
Height: 15 cm

Weight: 12 kg



Dumbbell Rack
Art.nr: 440

Length: 227 cm
Width: 58 cm
Height: 79 cm

Weight: 45 kg



Rack for 5 dumbbell pairs
Art.nr: 440F1200-

Length: 120 cm
Width: 62 cm
Height: 62 cm

Weight: 40 kg



Rack for 10 dumbbell pairs
Art.nr: 440F2400-

Length: 240 cm
Width: 62 cm
Height: 62 cm

Weight: 73,5 kg



Barbell Rack for
5 Barbells
Art.nr: 445H

Length: 89 cm
Width: 88 cm
Height: 138 cm
Weight: 37 kg



Barbell Rack for
10 Barbells
Art.nr: 450H

Length: 89 cm
Width: 88 cm
Height: 138 cm
Weight: 60,5 kg



Rack for Medicinballs
Art.nr: 470

High quality rack for medicin balls. Available in 2 versions: 1 side for 5 balls or 2 sides for 10 balls.



Dumbbell Rack for 10 pairs
Art.nr: 840

Length: 230 cm
Width: 60 cm
Height: 64 cm
Weight: 67 kg



Kettlebell Rack
Art.nr: 443

Length: 55 cm
Width: 126 cm
Height: 70 cm
Weight: 32,5 kg



Rack for bodypump weights and barbells
Art.nr: 480

Length: 80 cm
Width: 115 cm
Height: 152 cm

Weight: 51 kg



Handle Carriage
Art.nr: 495

Available in 2 versions: -2sides with legs and wheels or -1 side board with wall mount.

Length: 130 cm
Width: 50,5 cm
Height: 131 cm

Weight: 65,5 kg
(18 kg for only board)



Strech Module
Art.nr: 490

Length: 100 cm
Width: 125 cm
Height: 206 cm



Barbell Lift / Deadlife Barbell Jack
Art.nr: 898

Length: 126 cm
Height: 122 cm
Width: 30 cm
Weight: 12 kg



Barbell Lift Mini
Art.nr: 899

An equipment that provides you the support you need when changing heavy weights while doing deadlift exercise.



Half Rack Double Sided
Art.nr: 848D

Available in 2 versions: Half Rack and Half Rack Double. High quality with training opportunities for the whole body.

Length: 203 cm
Width: 164 cm
Height: 230 cm
Weight: 180 kg

Functional Fitness, Calisthenics and Strongman

Gymleco has also equipment for other than just traditional fitness and strength equipment. Trends that have emerged in recent years are Functional Fitness, Street Workout and Strongman.

Strongman is a discipline in strength sports that focuses on functional strength. Instead of standard bumper plates and barbells, they use among other things, cars, and tires as equipment. Street Workout is a combination between gymnastics and parkour where body weight is used. Gymleco has for several years chosen to sponsor the various competitions in this area of training. All of the equipment is specifically designed and unique for the sport.

Read more about our products on our website: www.gymleco.com







Farmers Walk with handles
Art.nr: 666

Weight: 15 kg



Conan Circle w/ weight stack
Art.nr: 665

A classic Strongman tool where weights are used in a circulating motion.



Viking Press
Art.nr: 830

Popular equipment for those who want to optimize their shoulder workout. Start weight in the handles: 21 kg

Length: 121 cm
Width: 98 cm
Height: 154 cm



Bumper Plate, Slamball Rack
Art.nr: 896

Picture shows the original racksize. You can add tiers with shelves that makes it possible to store your kettlebells or other small equipment.

Length: 120 cm
Width: 40 cm
Height: 164 - 108 cm



Magnesium Rack
Art.nr: 692

A magnesium holder allows you to keep your magnesium in order and minimize the waste.



Powerrack
Art.nr: 649

Length: 82 cm
Width: 122 cm
Height: 241 cm



Half Rack
Art.nr: 848

Length: 116 cm
Width: 164 cm
Height: 230 cm

Weight: 101 kg



Half Rack Double Sided
Art.nr: 848D

Length: 202,7 cm
Width: 164 cm
Height: 230 cm

Weight: 180 kg



Power Tyre 40 kg, 60kg, 80 kg
Art.nr: N69

Measures: D40/87x25cm - 40kg
Measures: D50/103x31cm - 60kg
Measures: D60/122x34cm - 80kg



Tactical Weight Vest
Art.nr: 751

Weight: 9 kg
Weights are included
Available in green and black



Strongman Sand Bags, XS - XL
Art.nr: 869

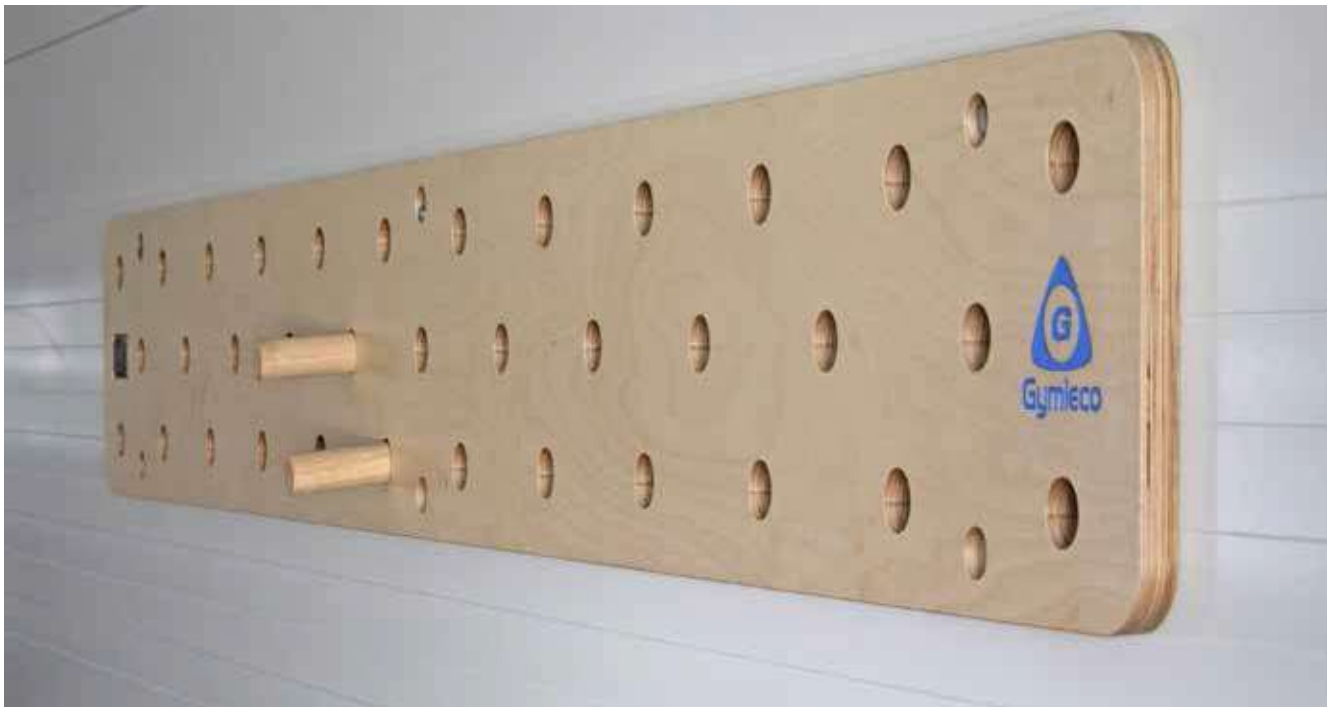
Available in 5 different sizes: XS:
30 kg, S: 45 kg, M: 65 kg, L: 85kg,
XL: 115 kg. Delivered without sand.
Closed with accompanying ball and
cable tie.



AB Sling
Art.nr: N42

High quality AB Sling, softly padded and with strong loops.

Color: Black with white logo.



Peg Board
Art.nr: 611

Two sticks of oak is included
High quality Peg Board. Measures: 2420x300 mm

Warranty

Warranty - ISO9001-

Gymleco's unique warranty ensures that your training equipment always works. We can confidently guarantee that our equipment is designed and manufactured with the goal of high performance combined with maintenance free operation. In order to maintain a top tier performance, Gymleco follows the ISO9001 - insurance system.

We offer a unique warranty that clearly defines coverage for various equipment parts. All of our spare parts are kept ready and available for quick delivery. A lifetime warranty is provided on all steel frames and weldings, large bearings, weight stack, engraving, shock absorbing discs in weight stack, weight stack bars, bar hangers and cam shaft. The lifetime guarantee includes fabrication and material errors.

A 10 year warranty is provided on Power band (only -300Series), the band stretching system, bearings and band wheels, the seat adjustment system, all setting possibilities, and the rubber handles. Guarantee is also provided on fabrication and material errors.

One year warranty on pads and one year warranty on the Powerband (200-Series)

ISO9001 - Quality Insurance System

At Gymleco we work in accordance with the ISO Quality Insurance System in order to maintain control and improve all production simultaneously as changes are implemented. This coordination allows the manufacturing process to be more efficient and delivers a better product to customers.

The goals of ISO9001- are as follows: superior quality, accurate delivery, best price, quick production and service. All Gymleco products are produced in-house which allows us to maintain the production and quality.

We take pride in all of our products as we strive to provide the fitness gym equipment on the market.





Gymleco



جلف أثلتيكس
GULF
ATHLETICS

+973 33632662 | +973 13636000

Store 62, Building 3427, Road O185, Block 701, Tubli

Kingdom of Bahrain

support@gulfathletics.com

gulfathletics.com

www.gymleco.com

@gymleco